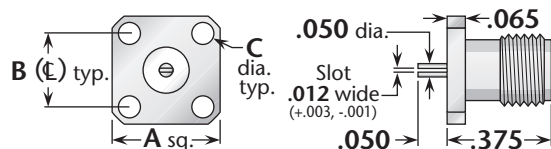
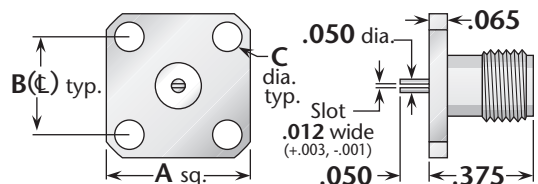


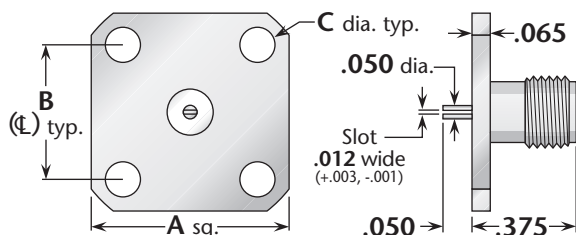
## Panel Jack Receptacle—Slotted Contact



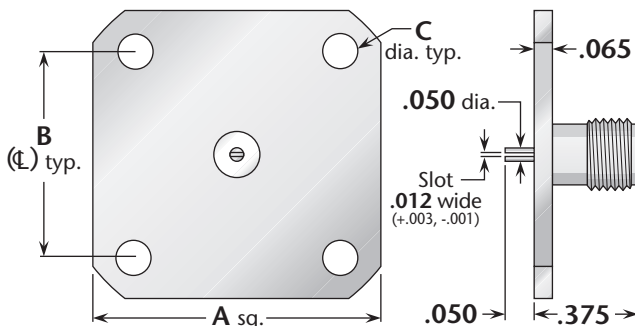
**Figure 1**  
(3/8" square flange)



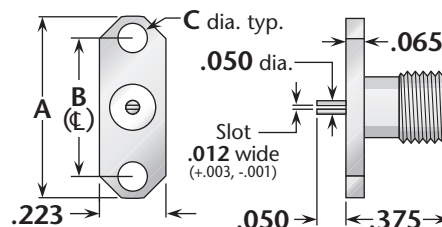
**Figure 2**  
(1/2" square flange, SMA standard flange size)



**Figure 3**  
(11/16" square flange, interchangeable with BNC and TNC standard flange size)



**Figure 4**  
(1" square flange, interchangeable with type N standard flange size)



**Figure 5**  
(2-hole flange)

### Other Standard Slot Widths

Our other standard slot widths for these connectors (.018" and .036") are readily available—call for part numbers.

Figure	Dimensions			Mounting Figure	Plating		Delta P/N
	A	B	C		Body	Contact	
1	.375	.250	.067	91	Gold	Gold	1343-000-G910-3
1	.375	.250	.067	91	Passivated	Gold	1343-000-K910-3
1	.375	.250	.067	91	Gold	Gold (C)	1343-000-G911-6
1	.375	.250	.067	91	Passivated	Gold (C)	1343-000-K911-6
2	.500	.340	.102	05	Gold	Gold	1343-000-G050-6
2	.500	.340	.102	05	Passivated	Gold	1343-000-K050-6
2	.500	.340	.102	05	Gold	Gold (C)	1343-000-G051-21
2	.500	.340	.102	05	Passivated	Gold (C)	1343-000-K051-21
3	.687	.500	.125	09	Gold	Gold	1343-000-G090-1
3	.687	.500	.125	09	Passivated	Gold	1343-000-K090-1
3	.687	.500	.125	09	Gold	Gold (C)	1343-000-G091-6
3	.687	.500	.125	09	Passivated	Gold (C)	1343-000-K091-6
4	1.00	.718	.125	33	Gold	Gold	1343-000-G330-6
4	1.00	.718	.125	33	Passivated	Gold	1343-000-K330-6
4	1.00	.718	.125	33	Gold	Gold (C)	1343-000-G331-11
4	1.00	.718	.125	33	Passivated	Gold (C)	1343-000-K331-11
5	.625	.481	.102	92	Gold	Gold	1343-000-G920-4
5	.625	.481	.102	92	Passivated	Gold	1343-000-K920-4
5	.625	.481	.102	92	Gold	Gold (C)	1343-000-G921-6
5	.625	.481	.102	92	Passivated	Gold (C)	1343-000-K921-6

See page 203 for mounting dimensions. • (C) in contact plating column indicates captive contact (epoxy captivated).  
All items available with other flange, contact, and insulator configurations.