

Panel Jack Receptacle—Post Contact

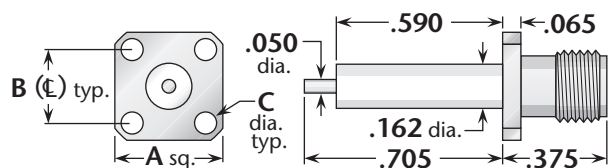


Figure 1
(3/8" square flange)

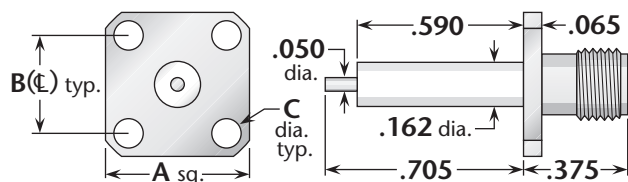


Figure 2
(1/2" square flange, SMA standard flange size)

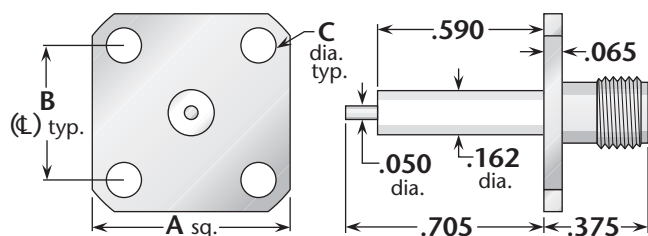


Figure 3
(11/16" square flange, interchangeable with BNC and TNC standard flange size)

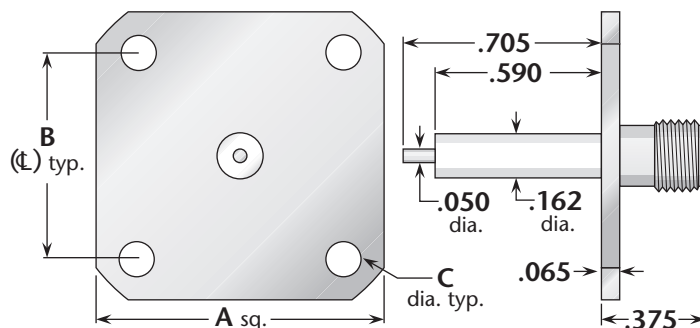


Figure 4
(1" square flange, interchangeable with type N standard flange size)

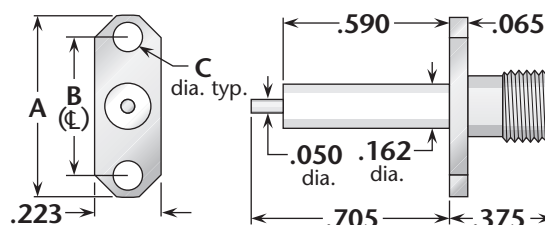


Figure 5
(2-hole flange)

Figure	Dimensions			Mounting Figure	Plating		Delta P/N
	A	B	C		Body	Contact	
1	.375	.250	.067	91	Gold	Gold	1358-000-G910-3
1	.375	.250	.067	91	Passivated	Gold	1358-000-K910-3
1	.375	.250	.067	91	Gold	Gold (C)	1358-000-G911-61
1	.375	.250	.067	91	Passivated	Gold (C)	1358-000-K911-61
2	.500	.340	.102	05	Gold	Gold	1358-000-G050
2	.500	.340	.102	05	Passivated	Gold	1358-000-K050-4
2	.500	.340	.102	05	Gold	Gold (C)	1358-000-G051
2	.500	.340	.102	05	Passivated	Gold (C)	1358-000-K051
3	.687	.500	.125	09	Gold	Gold	1358-000-G090
3	.687	.500	.125	09	Passivated	Gold	1358-000-K090
3	.687	.500	.125	09	Gold	Gold (C)	1358-000-G091-14
3	.687	.500	.125	09	Passivated	Gold (C)	1358-000-K091-14
4	1.00	.718	.125	33	Gold	Gold	1358-000-G330
4	1.00	.718	.125	33	Passivated	Gold	1358-000-K330
4	1.00	.718	.125	33	Gold	Gold (C)	1358-000-G331-3
4	1.00	.718	.125	33	Passivated	Gold (C)	1358-000-K331-3
5	.625	.481	.102	92	Gold	Gold	1358-000-G920
5	.625	.481	.102	92	Passivated	Gold	1358-000-K920
5	.625	.481	.102	92	Gold	Gold (C)	1358-000-G921-10
5	.625	.481	.102	92	Passivated	Gold (C)	1358-000-K921-10

See page 203 for mounting dimensions. • (C) in contact plating column indicates captive contact (epoxy captivated).
All items available with other flange, contact, and insulator configurations.