

M39012/60—SMA Panel Jack Receptacle

Figure 1

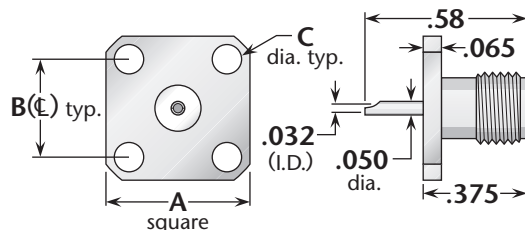
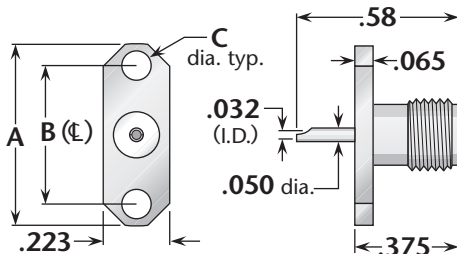


Figure 2



M39012 P/N	Figure	Dimensions			Plating	
		A	B	C	Body	Contact
M39012/60-3001	1	.500	.340	.102	Passivated	Gold (C)
M39012/60-3002	2	.625	.481	.102	Passivated	Gold (C)

M39012/61—SMA Bulkhead Jack Receptacle

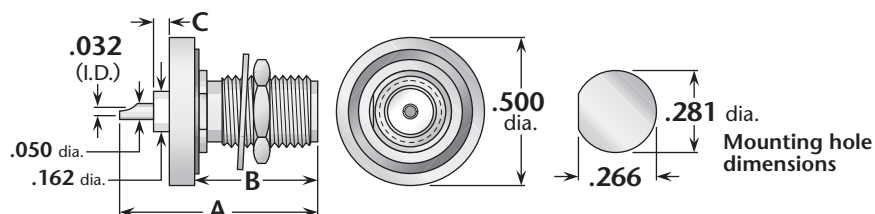


Figure 1 (Rear mount)

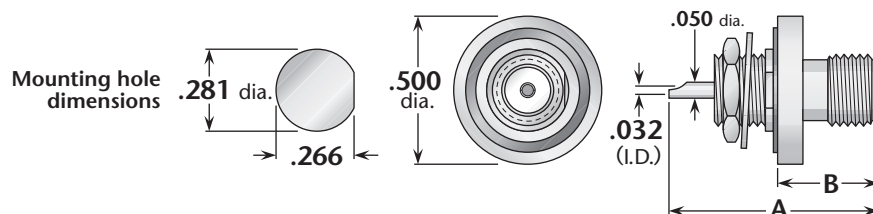


Figure 2 (Front mount)

M39012 P/N	Figure	Dimensions			Maximum Panel	Plating	
		A	B	C		Body	Contact
M39012/61-3001	1	.69	.415	.062	.103	Passivated	Gold (C)
M39012/61-3002	2	.69	.310	—	.103	Passivated	Gold (C)

(C) indicates captive contact.