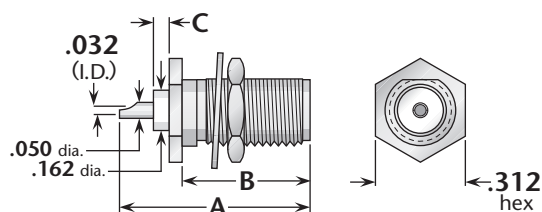
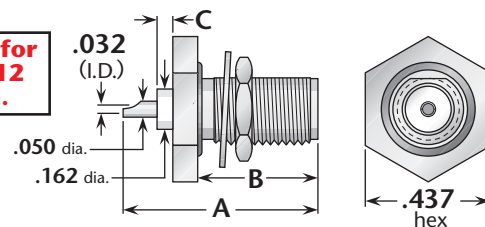


Bulkhead Jack Receptacles

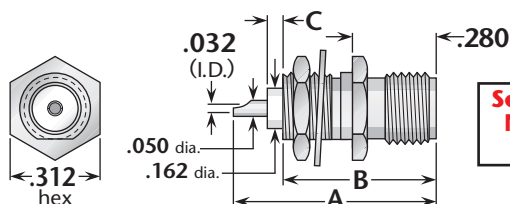

Figure 1

(Rear mount, solder pot contact, no mounting gasket)

See page 197 for
MIL-PRF-39012
QPL version.

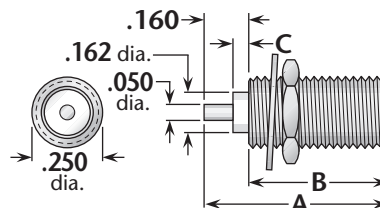

Figure 2

(Rear mount, solder pot contact, with mounting gasket)


Figure 3

(Front mount, solder pot contact, no mounting gasket)

See page 197 for
MIL-PRF-39012
QPL version.


Figure 4

(Round body, post contact)

Figure	Dimensions			Max. Panel	Mounting Figure	Plating		Delta P/N
	A	B	C			Body	Contact	
1	.67	.450	.000	.125	67	Gold	Gold (C)	1320-000-G671
1	.67	.450	.000	.125	67	Passivated	Gold (C)	1320-000-K671
1	.67	.450	.062	.125	67	Gold	Gold (C)	1320-000-G821-2
1	.67	.450	.062	.125	67	Passivated	Gold (C)	1320-000-K821
2	.67	.415	.062	.093	67	Gold	Gold (C)	1320-000-G821
2	.67	.415	.062	.093	67	Passivated	Gold (C)	1320-000-K821-11
3	.67	.500	.062	.125	67	Gold	Gold (C)	1320-000-G671-5
3	.67	.500	.062	.125	67	Passivated	Gold (C)	1320-000-K671-5
4	.66	.500	.076	.125	82	Gold	Gold	1321-000-G820-3
4	.66	.500	.076	.125	82	Passivated	Gold	1321-000-K820-3
4	.66	.500	.076	.125	82	Gold	Gold (C)	1321-000-G821
4	.66	.500	.076	.125	82	Passivated	Gold (C)	1321-000-K821-14
4	.66	.500	.000	.125	82	Gold	Gold (C)	1321-000-G821-65
4	.66	.500	.000	.125	82	Passivated	Gold (C)	1321-000-K821-65

Printed-Circuit Board Receptacles—Through-Hole Mount

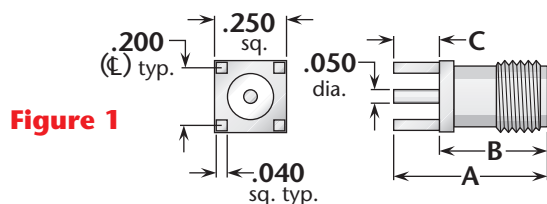
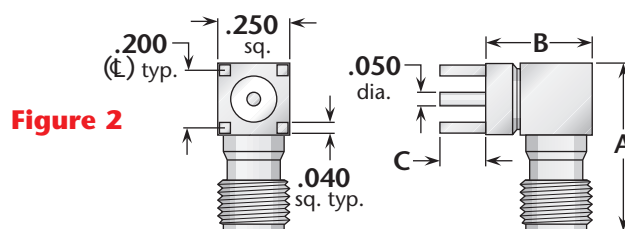

Figure 1

Figure 2

Figure	Dimensions			Max. Board	Mounting Figure	Plating		Delta P/N
	A	B	C			Body	Contact	
1	.53	.375	.155	.125	PCB05	Gold	Gold (C)	1367-000-G911
2	.583	.375	.155	.125	PCB05	Gold	Gold (C)	1369-000-G000

See page 203 for mounting dimensions. • (C) in contact plating column indicates captive contact (epoxy captivated).
All items available with other contact and insulator configurations.