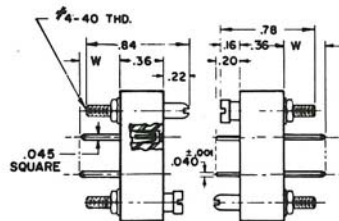


TYPE W

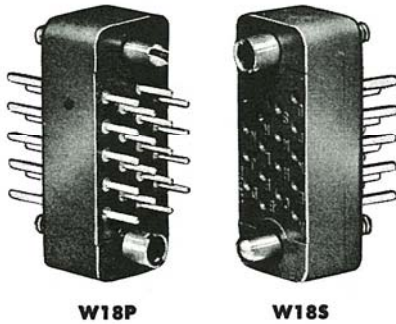
solderless-wrap termination



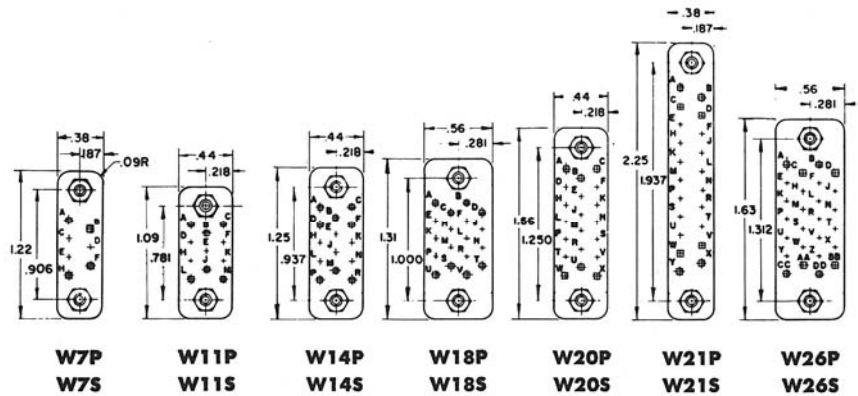
PART NUMBER	DIM "W"	NO. OF WIRES ACCOMMODATED
PLUG RECEPTACLE		
WI 1-20P WI 1-20S	.31	1
WI 1-20P-1 WI 1-20S-1	.56	2
WI 1-20P-2 WI 1-20S-2	.81	3

WIRING SIDE OF
PLUG CONNECTORS SHOWN

RECEPTACLE PLUG

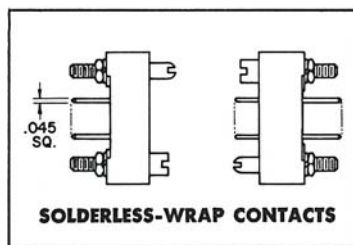


ACTUAL SIZE

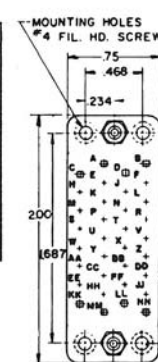


.045" SQUARE SOLDERLESS-WRAP TERMINATIONS CLOSED ENTRY SOCKET CONTACT

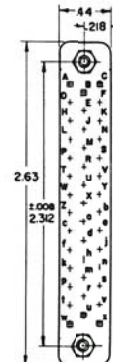
Series W rack and panel connectors are available with seven through 104 contacts, and feature .045" square solderless-wrap terminations and closed entry socket contacts providing extra protection against probe damage. Connectors can be supplied with guide pins and guide sockets or polarizing screwlocks. Optional equipment includes aluminum hoods, protective shells and mounting plates. Plastic bodies are molded from E2 type black phenolic or glass reinforced materials. For glass reinforced Diallyl Phthalate add "GD" (green) to part number (W18PGD). Socket contact material is gold plated phosphor bronze; pin contact, gold plated brass.



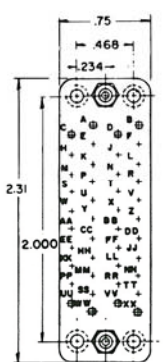
SOLDERLESS-WRAP CONTACTS



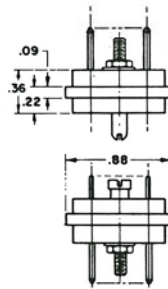
W34P
W34S



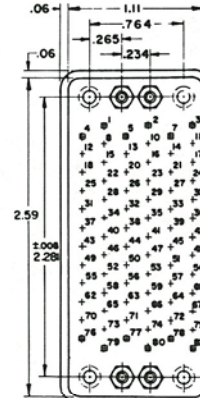
W41P
W41S



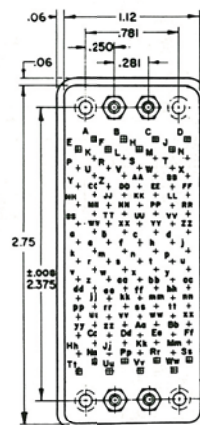
W42P
W42S



W50P
W50S



W75P
W75S

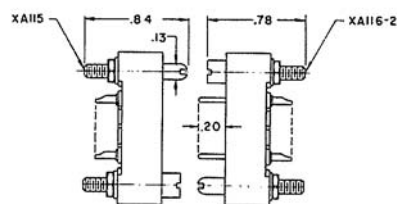


W104P
W104S

ELECTRICAL AND MECHANICAL RATINGS

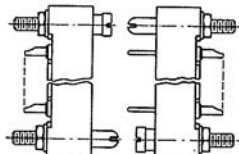
Voltages:	Breakdown	Recommended Test
Contact-to-Contact and Contact-to-Hardware		
At Sea Level	3000V. RMS	2000V. RMS
At 70,000 Ft.	450V. RMS	325V. RMS
Current Rating:		
5 Amps Continuous		7.5 Amps Max.
Minimum Creepage Between Contacts		.078"
Minimum Air Space Between Contacts		.078"
Contacts, Center-to-Center		.150"
Contact Termination:		
.045" Square for Solderless-Wrap		

PROFILE DIMENSIONS WITH OPTIONAL GUIDES AND SCREWLOCK HARDWARE DETAIL



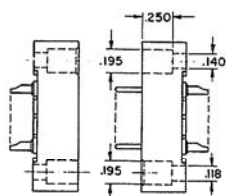
W □ S W □ P

FIG. 1



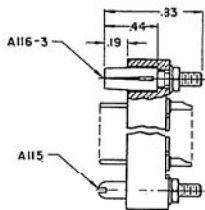
W □ SXR W □ PXR

FIG. 2



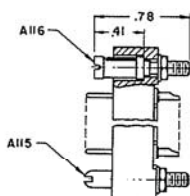
W □ SW W □ PW

FIG. 3



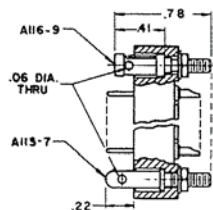
W □ PG
W □ SG

FIG. 4



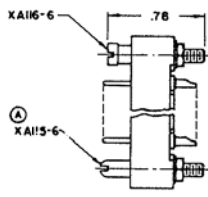
W □ PE
W □ SE

FIG. 5



W □ PY
W □ SY

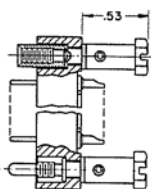
FIG. 6



W □ PSS
W □ SSS

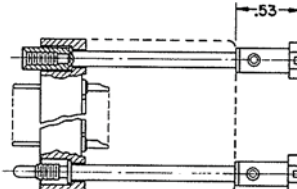
FIG. 7

POLARIZING SCREWLOCKS



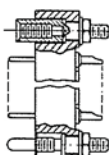
W □ PSK
W □ SSK

FIG. 8



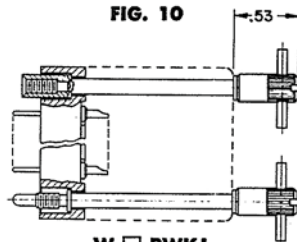
W □ PWK
W □ SWK

FIG. 10



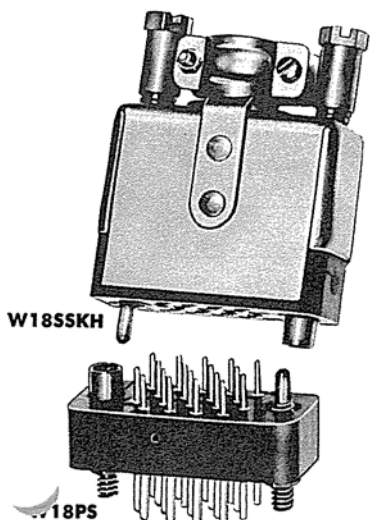
W □ PS
W □ SS

FIG. 9

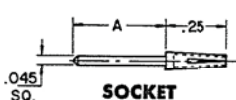


W □ PWKJ
W □ SWKJ

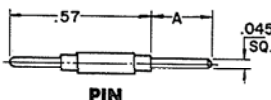
FIG. 11



ACTUAL SIZE



SOCKET



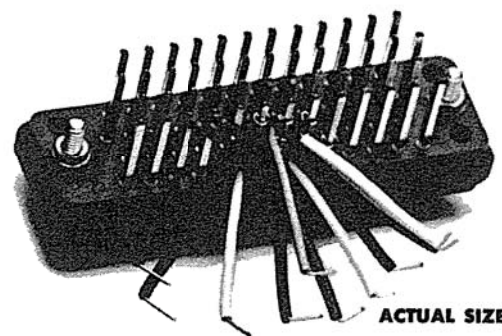
PIN

PART NO	TYPE	A
102-45	W	.31
	W1	.56
	W2	.81

PART NO	TYPE	A
101-45	W	.31
101-46	W1	.56
101-54	W2	.81

WINCHESTER ELECTRONICS CORPORATION - CONTINENTAL CONNECTOR

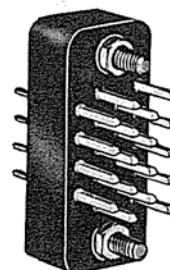
TYPE W solderless-wrap termination



ACTUAL SIZE

NOTES

- FIG. 1 - Connector supplied with guides... no grounding leaf.
- FIG. 2 - Connector supplied with reversed guides: guide pins and sockets interchanged ("R").
- FIG. 3 - Connector supplied without guides ("W").
- FIG. 4 - Connector supplied with "G" guides for grounding.
- FIG. 5 - Connector supplied with leaf type guide sockets when suffix "E" is designated.
- FIG. 6 - Connector supplied with hole in guide in place of screwdriver slot ("Y").
- FIG. 7 - Connector supplied with stainless steel guides ("SS").
- FIG. 8 - Screwlocks (.53" knob, cable mounted).
- FIG. 9 - Screwlocks, panel mounted.
- FIG. 10 - Connectors supplied with screwlocks for hood assembly. Hood not included but can be ordered separately.
- FIG. 11 - Connector supplied with screwlocks and type "J" knob for hood assembly. Hood not included but can be ordered separately.



ACTUAL SIZE

REAR VIEW
ILLUSTRATES
.045" SQUARE
TERMINATIONS