

NOTES:

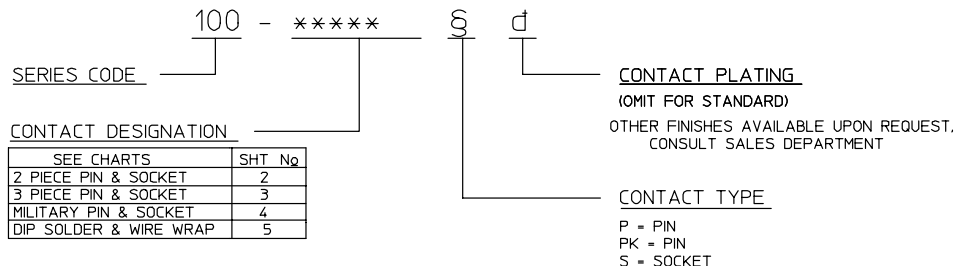
1. REF - WIRE STRIP LENGTH TO BE .187/4.75.

2. CRIMP CONTACTS AVAILABLE ON REELS (2000/REEL).
SEE CHART FOR REEL PART No

3. CATALOG NUMBER CODE:

| REV | DESCRIPTION | BY DATE | APPD |
|-----|-----------------------|-----------------|--------|
| H | REVISED PER ECR# 6003 | CMB 09/16/99 | W.P.M. |

100 SERIES CODE ORDER CHART



SPECIFICATIONS

MATERIALS & FINISHES

- ① **Socket Contact** ————— Material: Copper Alloy
Finish: Standard= 8µ"/0.2µm Min Gold Over Nickel
Military= 50µ"/1.25µm Min Gold Over Nickel
- ② **Pin Contact** ————— Material: Copper Alloy
Finish: Standard= 8µ"/0.2µm Min Gold Over Nickel
Military= 50µ"/1.25µm Min Gold Over Nickel
- ③ **Retainer Clip** ————— Material: Standard= Beryllium Copper Alloy
Finish: Gold Plated
- ④ **Contact Spring** ————— Material: Beryllium Copper Alloy
Finish: Standard= Nickel Plated
Military= Gold Plated
- ⑤ **Contact Spring** ————— Material: Beryllium Copper Alloy
Finish: Gold Plated

PERFORMANCE CHARACTERISTICS

- Conforms to ————— MIL-C-39029
- Current rating ————— 7.5 amps. max. for 0.040/102 per individual contact
13 amps max for 0.0625/1587 per individual contact

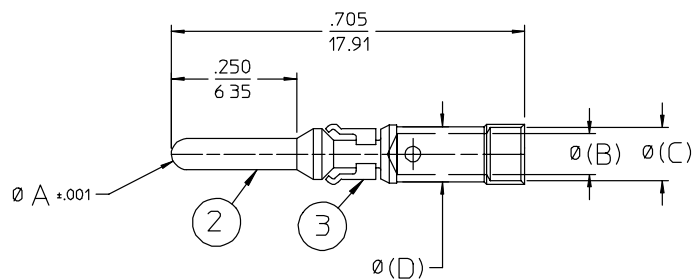
ACCESSORY TOOLS

| DESCRIPTION | CATALOG No | LOCATORS/POSITIONERS | CRIMP DEPTH BLOCK | SPANNER WRENCH |
|-------------------------------------|-------------|--|------------------------------|----------------|
| INSERTION TOOL | 107-1015 | ————— | ————— | ————— |
| REMOVAL TOOL | 107R-1001 | | | |
| REMOVAL TOOL | 107-1005 | | | |
| NON-ADJUSTABLE HAND CRIMP MS-3191-2 | 107-0970 | 107-0981 (#14) 107-0977 (#16,#18) 107-0976 (#20,#22,#24,#26) | ————— | 107-1102 |
| HAND CRIMP | 107-0903-2A | 107-0945 | | |
| PNEUMATIC AUTOMATIC CRIMP | 107-0961 | ————— | 107-0965-#20 107-0966-#16 | ————— |
| NON-ADJUSTABLE MINIATURE HAND CRIMP | 107-43300 | 107-43304 107-0993 (#20,#22,#24,#26) | ————— | |
| ADJUSTABLE MINIATURE HAND CRIMP | 107-0625 | 107-0628 | | |
| CONTACT PIN STRAIGHTENER | 107-1024 | ————— | | |
| GAGE PLUG | 5431 | ————— | ————— | ————— |

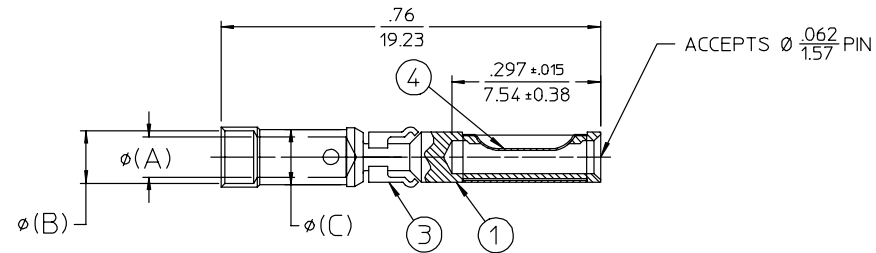
| | | |
|--|--|---|
| PER ANSI Y14.5M-1982 UNLESS OTHERWISE SPECIFIED: DIMENSIONS ARE IN INCHES OR INCHES / 16 TOLERANCES DECIMALS xx ± .02 xxx ± .010 ANGLES ° SCALE: 5:1 | | Litton Winchester Electronics 400 PARK ROAD WATERTOWN, CONNECTICUT 06795 |
| CUSTOMER DRAWING | | |
| DRAWN: K.D.B. DATE: 03/28/96 CHECKED: W.P.M. DATE: 03/29/96 APPROVED: V.B.H. DATE: 03/28/96 R.D.R. DATE: 03/29/96 | | TITLE MRAC REMOVABLE PIN & SOCKET CONTACTS |
| C 22891 | | SHT. 1 OF 5 REV. H |

| REV | DESCRIPTION | BY DATE | APPD |
|-----|-----------------------|--------------------|--------|
| H | REVISED PER ECR# 6003 | C.W.B. 09/16/99 | M.C.M. |

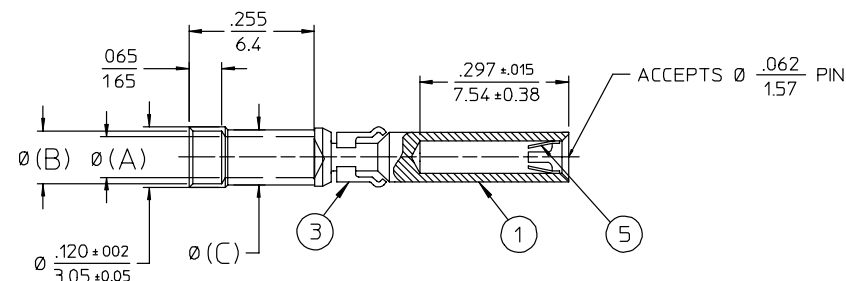
PIN



3 PIECE SOCKET



TYPE A



TYPE B

| PIN $\phi A = .0625/1.587$ | | PIN $\phi A = .040/1.02$ | | WIRE SIZE | B | C | D |
|----------------------------|--------------|--------------------------|--------------|-----------|-----------|-----------|-----------|
| CONTACT | REEL | CONTACT | REEL | | | | |
| 100-1024PK-d | 100-0976PK-d | 100-2024PK-d | 100-0990PK-d | 24-26-28 | .027/0.68 | .055/1.40 | .077/1.95 |
| 100-1022PK-d | 100-0975PK-d | 100-2022PK-d | 100-0980PK-d | 22-24-26 | .033/0.84 | .069/1.75 | .096/2.44 |
| 100-1020PK-d | 100-0974PK-d | 100-2020PK-d | 100-0998PK-d | 20-22-24 | .046/1.17 | .094/2.39 | .110/2.79 |
| 100-1018PK-d | 100-0973PK-d | 100-2018PK-d | 100-0989PK-d | 18-20-22 | .052/1.32 | .105/2.67 | .110/2.79 |
| 100-1016PK-d | 100-0972PK-d | 100-2016PK-d | 100-0988PK-d | 16-18-20 | .068/1.73 | .105/2.67 | .110/2.79 |
| 100-1014PK-d | 100-0971PK-d | — | — | 14-16-18 | .081/2.06 | .105/2.67 | .110/2.79 |

| CATALOG No | REEL CAT. No | WIRE SIZE | A | B | C | TYPE |
|--------------|--------------|-----------|-----------|-----------|-----------|------|
| 100-51014S-d | 100-0981S-d | 14-16-18 | .081/2.06 | .105/2.67 | .110/2.79 | A |
| 100-51016S-d | 100-0982S-d | 16-18-20 | .067/1.70 | .094/2.39 | .096/2.44 | |
| 100-51018S-d | 100-0983S-d | 18-20-22 | .052/1.32 | .078/1.98 | .077/1.95 | |
| 100-51020S-d | 100-0984S-d | 20-22-24 | .045/1.14 | .067/1.70 | .055/1.40 | |
| 100-51022S-d | 100-0985S-d | 22-24-26 | .033/0.84 | .055/1.40 | .077/1.95 | |
| 100-51024S-d | 100-0986S-d | 24-26-28 | .027/0.68 | .050/1.27 | .077/1.95 | B |
| 100-51026S-d | 100-0987S-d | 26-28-30 | .024/0.61 | .050/1.27 | .110/2.79 | |
| 100-61014S-d | 100-8024S-d | 14-16-18 | .081/2.06 | .105/2.67 | .096/2.44 | |
| 100-61016S-d | 100-8025S-d | 16-18-20 | .067/1.70 | .094/2.39 | .077/1.95 | |
| 100-61018S-d | 100-8026S-d | 18-20-22 | .052/1.32 | .078/1.98 | .055/1.40 | |
| 100-61020S-d | 100-8027S-d | 20-22-24 | .045/1.14 | .067/1.70 | .077/1.95 | |
| 100-61022S-d | 100-8028S-d | 22-24-26 | .033/0.84 | .055/1.40 | .077/1.95 | |
| 100-61024S-d | 100-8029S-d | 24-26-28 | .027/0.68 | .050/1.27 | .077/1.95 | |
| 100-61026S-d | 100-8030S-d | 26-28-30 | .024/0.61 | .050/1.27 | .077/1.95 | |

PER ANSI Y14.5M-1982
UNLESS OTHERWISE SPECIFIED,
DIMENSIONS ARE IN INCHES — OR INCHES / MM
TOLERANCES
DECIMALS xx $\pm .02$
xxx $\pm .010$
ANGLES * SCALE: 5:1

Litton

Winchester
Electronics

400 PARK ROAD
WATERTOWN, CONNECTICUT
06795

**CUSTOMER
DRAWING**



TITLE

MRAC REMOVABLE
PIN & SOCKET CONTACTS

| | | | |
|----------|----------|----------|----------|
| DRAWN | DATE | CHECKED | DATE |
| K D B | 03/28/96 | W.P.M. | 03/29/96 |
| APPROVED | DATE | APPROVED | DATE |
| V B H | 03/28/96 | R.D.R. | 03/29/96 |

C

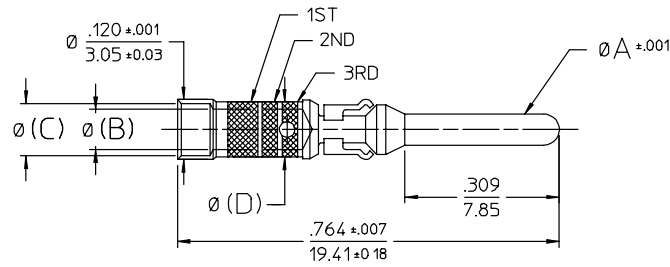
22891

SHT 3 OF 5

REV.
H

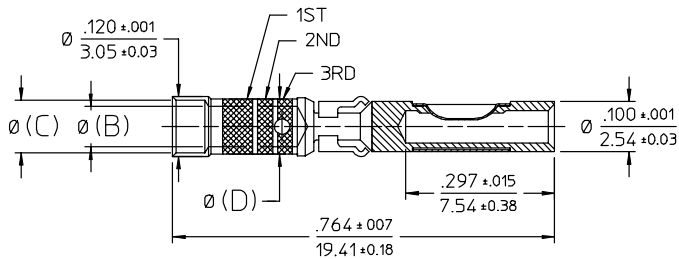
MILITARY PIN & SOCKET ASSEMBLIES

| REV | DESCRIPTION | BY DATE | APPD |
|-----|-----------------------|--------------------|--------|
| H | REVISED PER ECR# 6003 | C.W.B. 09/16/99 | W.P.M. |

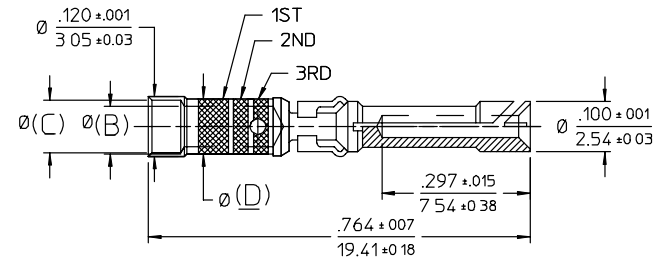


PIN CONTACTS

| PARTS LIST | | | | | | | | | | | |
|--------------------------------------|------------------------------------|--------------------------|-------------|--------|--------|-----------|-----------|-----------|-----------|-----------|--------------------------|
| MILITARY CONTACT CAT. N _Q | W.E.D. CONTACT CAT. N _Q | REEL CAT. N _Q | COLOR BANDS | | | WIRE SIZE | PIN Ø A | B | C | D | USED IN CONNECTOR SERIES |
| | | | 1ST | 2ND | 3RD | | | | | | |
| M39029/34-271 | 100R-2020P95 | 100R-0945P95 | RED | VIOLET | BROWN | 20-22-24 | .040/1.02 | .046/1.17 | .069/1.75 | .077/1.95 | M28748 |
| M39029/34-272 | 100R-1020P95 | 100R-0915P95 | | | RED | 20-22-24 | | | | | |
| M39029/34-273 | 100B-1016P95 | 100B-0911P95 | | | ORANGE | 16-18-20 | | | .068/1.73 | .094/2.39 | |



CATALOG N_Q'S M39029/35-275 & -276 SHOWN



CATALOG N_Q M39029/35-274 SHOWN

SOCKET CONTACTS

| PARTS LIST | | | | | | | | | | | |
|--------------------------------------|------------------------------------|--------------------------|-------------|--------|--------|-----------|--------------|-----------|-----------|-----------|--------------------------|
| MILITARY CONTACT CAT. N _Q | W.E.D. CONTACT CAT. N _Q | REEL CAT. N _Q | COLOR BANDS | | | WIRE SIZE | MATING PIN Ø | B | C | D | USED IN CONNECTOR SERIES |
| | | | 1ST | 2ND | 3RD | | | | | | |
| M39029/35-274 | 100R-2020S95 | 100R-0979S95 | RED | VIOLET | YELLOW | 20-22-24 | .040/1.02 | .046/1.17 | .069/1.75 | .077/1.95 | M28748 |
| M39029/35-275 | 100R-51020S95 | 100R-0984S95 | | | GREEN | 20-22-24 | | | | | |
| M39029/35-276 | 100B-51016S95 | 100B-0982S95 | | | BLUE | 16-18-20 | | | .068/1.73 | .094/2.39 | |

PER ANSI Y14.5M-1982
UNLESS OTHERWISE SPECIFIED:
DIMENSIONS ARE IN INCHES OR INCHES / MM

TOLERANCES
DECIMALS xx ± .02
 xxx ± .010

ANGLES X° SCALE: 5:1

Litton

Winchester Electronics

400 PARK ROAD
WATERTOWN, CONNECTICUT
06795

CUSTOMER DRAWING

DRAWN: K.D.B. DATE: 03/28/96 CHECKED: W.P.M. DATE: 03/29/96

APPROVED: V.B.H. DATE: 03/28/96 R.D.R. DATE: 03/29/96

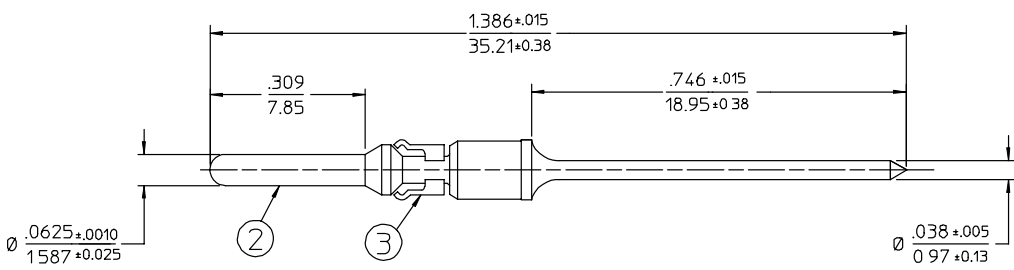
TITLE: MRAC REMOVABLE PIN & SOCKET CONTACTS

REV: H

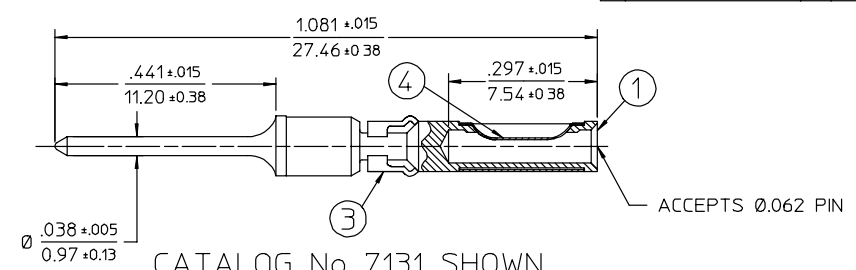
22891

SHT. 4 OF 5

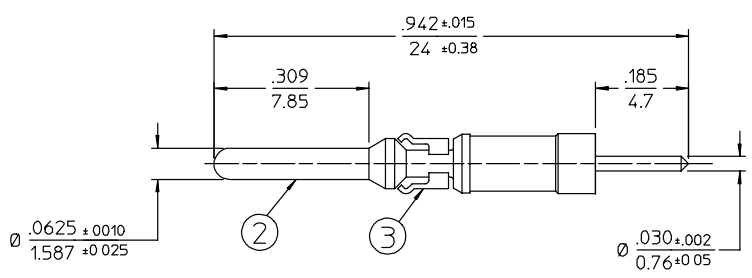
| REV | DESCRIPTION | BY DATE | APPD |
|-----|-----------------------|----------------------|--------|
| H | REVISED PER ECR# 6003 | C.M.A.S. 09/16/99 | W.P.M. |



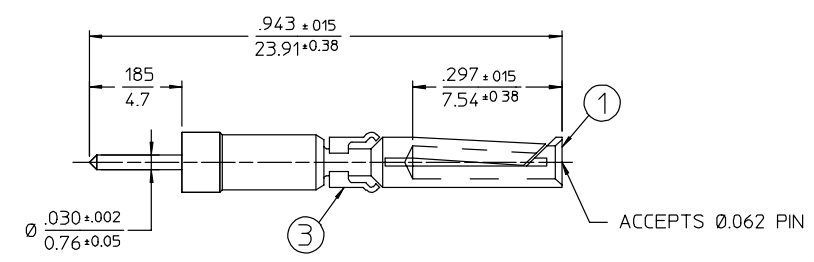
CATALOG No 7130 SHOWN



CATALOG No 7131 SHOWN

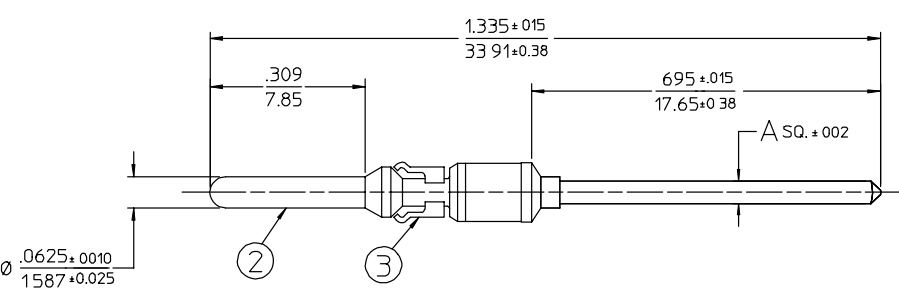


CATALOG No 8124-d SHOWN



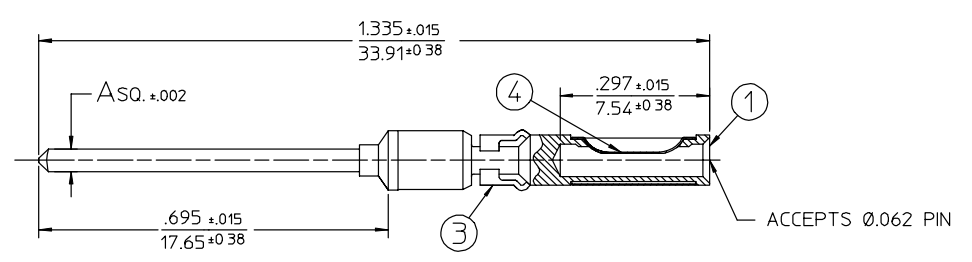
CATALOG No 8125-d SHOWN

DIP SOLDER CONTACTS



CATALOG No'S 8106-d AND 8114-d SHOWN

| CAT. No | A |
|---------|---------------|
| 8106-d | .045/1.43 SQ. |
| 8114-d | .025/0.64 SQ. |



CATALOG No'S 8105-d AND 8113-d SHOWN

| CAT. No | A |
|---------|---------------|
| 8105-d | .045/1.43 SQ. |
| 8113-d | .025/0.64 SQ. |

WIRE WRAP CONTACTS

| | | |
|---|----------------------------------|---|
| PER ANSI Y14.5M-1982 UNLESS OTHERWISE SPECIFIED: DIMENSIONS ARE IN INCHES. OR INCHES / MM | | Litton Winchester Electronics 400 PARK ROAD WATERTOWN, CONNECTICUT 06795 |
| TOLERANCES DECIMALS .XX ± .02 .XXX ± .010 ANGLES ° | SCALE 5:1 | |
| CUSTOMER DRAWING | | TITLE MRAC REMOVABLE PIN & SOCKET CONTACTS |
| DRAWN K.D.B. 03/28/96 | DATE CHECKED W.P.M. 03/29/96 | REV. H |
| APPROVED V.B.H. 03/28/96 | DATE APPROVED R.D.R. 03/29/96 | C 22891 SH: 5 OF 5 |