

PRODUCT REFERENCE SHEET

©2005

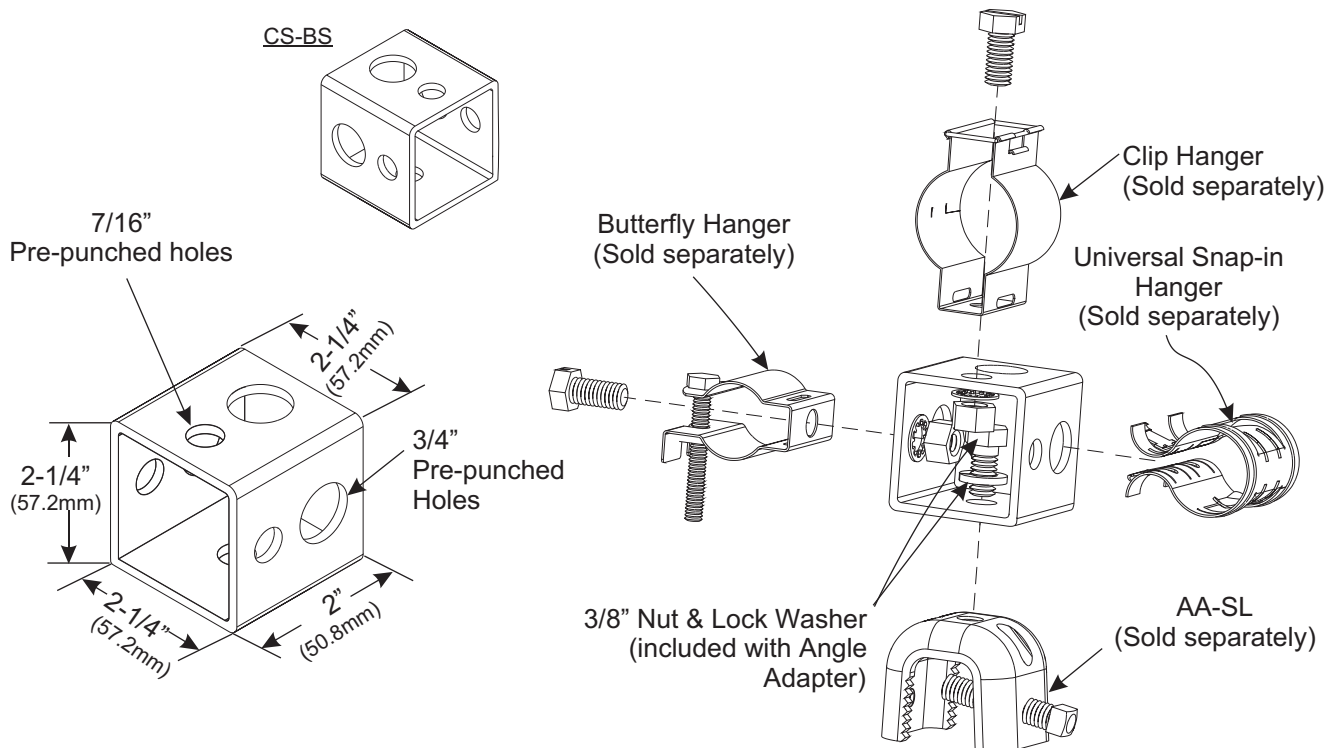
Mini Cluster Support Bracket for Coaxial Cable Applications

1568 PR A

PRODUCT DESCRIPTION

The Mini Cluster Support Bracket is a versatile means to support up to 3 runs of coaxial cable in virtually any application. Each bracket features pre-punched 3/4" holes to accommodate snap-in hangers and pre-punched 7/16" holes for butterfly hangers, clip hangers, and other cable hanger accessories utilizing standard 3/8" hardware. Centered on one face of the CS-BS is a single 7/16" mounting hole for attachment to angle adapters, stand-off adapters, or any pre-punched tower member that accepts 3/8" mounting hardware. Mini Cluster Support Brackets are offered in 12 gauge stainless steel or hot-dip galvanized steel construction.

TYPICAL APPLICATIONS



SPECIFICATIONS

Finish: Hot-dip Galvanized or Stainless Steel.
Material: 12 ga

MINI CLUSTER SUPPORT BRACKET			
Part #	Description	Weight lbs. (kg)	Kit Qty.
CS-BS	Mini Cluster Support Bracket	4.4 (2.0)	10



World Headquarters: 358 Hall Avenue, Wallingford, CT 06492 • 203-949-8400, 1-800-867-2629 FAX: 203-949-8423
International Sales: 4 School Brae, Dysart, Kirkcaldy, Fife, Scotland KY1 2XB UK • +44(0)1592655428 FAX: +44(0)1592653162
China Sales: Unit A, Floor 14, East Ocean Center, No. 618 Yan'an Road East, Shanghai, China 200001
TEL: 86-21-53854500/53854501 FAX: 86-21-53854506

www.timesmicrowave.com

© 2005, Times Microwave Systems, Wallingford, CT 06492