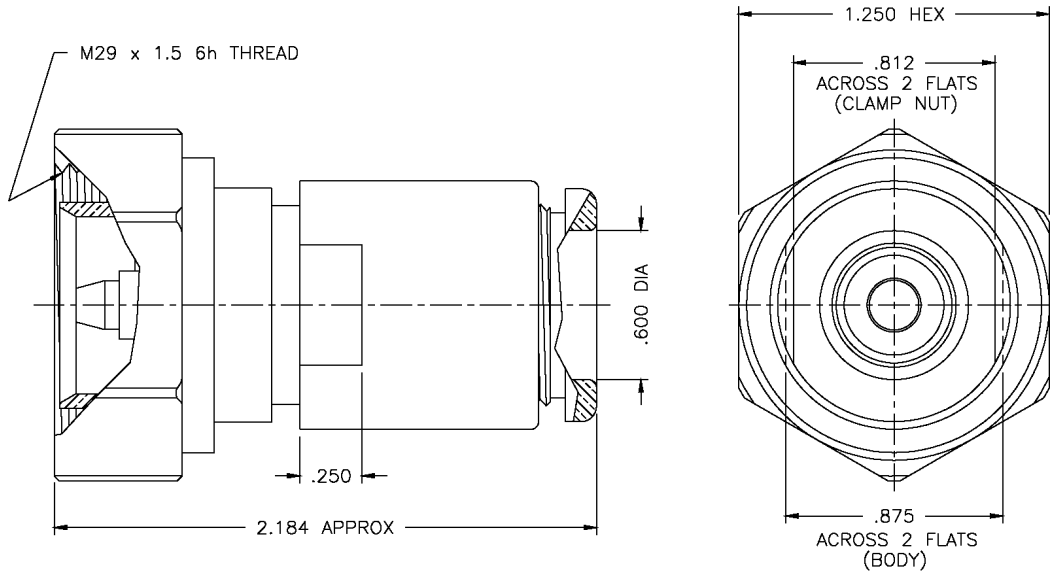


THE REVISION STATUS OF ALL SHEETS OF THIS DRAWING IS THE SAME AS SHEET 1

LTR	DESCRIPTION	DATE	BY
A	Released	11/7/96	JP
B	Updated Sketch	6/1/06	JCL



I. MATERIALS & FINISHES

center contact: Gold Plated Beryllium Copper
 outer contact: Silver Plated Brass
 body: Silver Plated Brass
 crimp sleeve: Silver Plated Copper
 dielectric: Teflon® PTFE
 gasket: Silicone Rubber
 shrink sleeve: Adhesive Lined Polyolefin
 attachment: braid clamp

II. ELECTRICAL PROPERTIES

impedance: 50 ohms
 working voltage: 2700 vrms (max)
 vswr: 1.25:1 (max) up to 2.5 GHz
 insertion loss: $0.1 \times \sqrt{F_{ghz}}$

Unless otherwise specified, dimensions are in inches. Tolerances are applicable when specified.

These drawings and specifications contain proprietary information which is the property of Times Microwave Systems.

Approvals

Drawn	JP	11/7/96



TIMES MICROWAVE SYSTEMS

Wallingford, CT 06492
 (203) 949-8400; (203) 949-8423.Fax
 www.timesmicrowave.com

TC-600-716MC

7/16 DIN male (plug)
 for LMR-600 Cable

Size
A

CAGE CODE
68999

Drawing No.:

3190-502

Scale: NA

Rev. (B)

Sheet: 1 of 1