

31 SERIES: Specifications & Interface Dimensions

MECHANICAL:

Materials:

Bodies, Plugs: Brass per ASTM B16, 1/2 HD
Bodies, Receptacles: Beryllium Copper per ASTM B196
Female Contacts: Beryllium Copper per ASTM B196
Male Contacts: Brass per ASTM B16, 1/2 HD
Insulators: Teflon per ASTM D1710
Crimp Ferrule: Annealed Copper Alloy
Clip Ring: Beryllium Copper per ASTM B194

Finish:

Body: Gold Plated per MIL-G-45204
Center Contact: Gold Plated per MIL-G-45204
Clip Ring: Nickel Plated per QQ-N-290

MATING CHARACTERISTICS:

Receptacles, Outer Contact:

3 lbs. Maximum Insertion on a $.1530 +.0001/-0.0000$ Dia. Pin and a 4 oz. Minimum Withdrawl on a $.1500 +.0000/-0.0001$ Dia. Pin

Plugs, Center Contact:

16 oz. Maximum Insertion on a $.0410 +.0001/-0.0000$ Dia. Pin and a .5 oz. Minimum Withdrawl on a $.0390 +.0000/-0.0001$ Dia. Pin

Retention in Shell: 15 lbs. Minimum

ELECTRICAL:

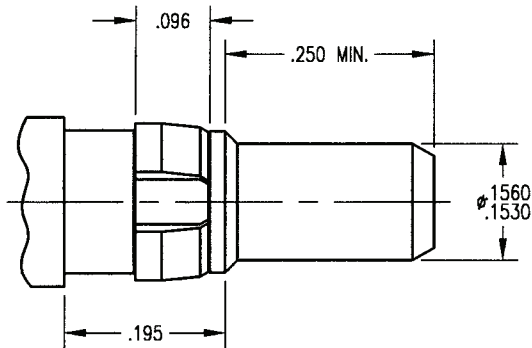
Impedance: 50 Ohms Nominal
Frequency Range: 0 to 5.0 GHz
Insulation Resistance: 5000 Megaohms Minimum
Contact Resistance: (Milliohms maximum)
Center Contact: 5.0
Outer Contact: 3.0
Voltage Standing Wave Ratio: 0 to 5.0 GHz
Straight Connector: $1.15 +.02F$ GHz on RG-316 Cable
Straight Connector: $1.15 +.01F$ GHz on .141 Dia. Semi-Rigid Cable

ENVIRONMENTAL:

Operating Temperature: -55°C to $+125^{\circ}\text{C}$
Vibration: MIL-STD-202, Method 204, Test Condition D
Shock: MIL-STD-202, Method 213, Test Condition I
Corrosion Resistance: MIL-STD-202, Method 101, Condition B

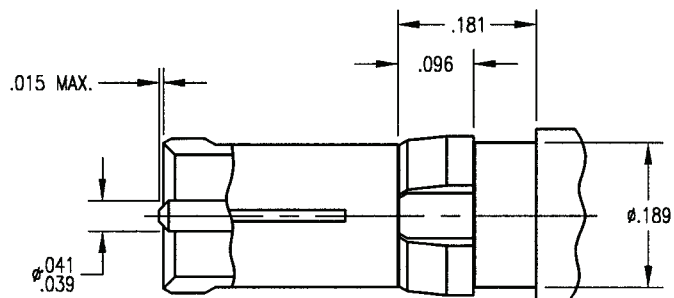
GENERAL INFORMATION:

31 Series Coaxial Contacts fit all D-Subminiature Connectors and are interchangeable with other manufacturer's product. Available in crimp or solder cable terminations.



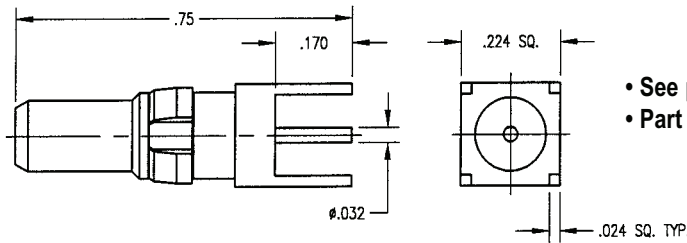
Plug Interface

Receptacle Interface



RDM 31 SERIES: Printed Circuit Board Contacts

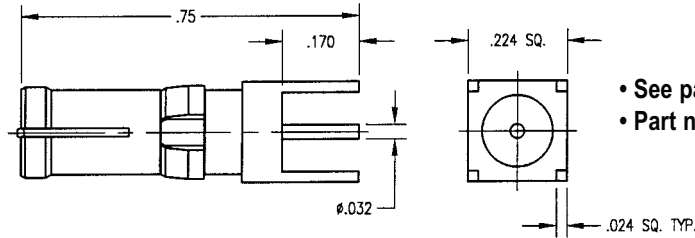
Straight Plug



Part Number	Mounting Hole
310-010-6040G	N0. 060A

- See page 78 for mounting hole layout.
- Part number shown is for standard gold plating.

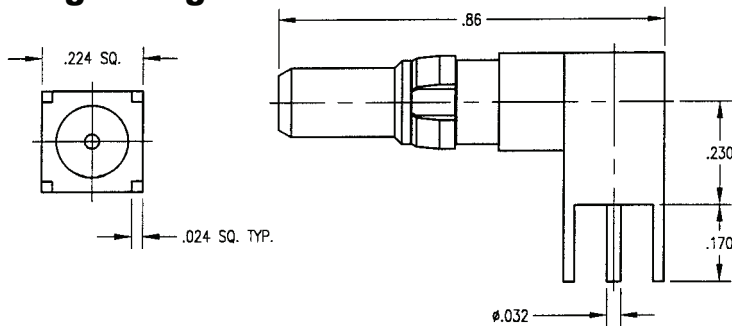
Straight Receptacle



Part Number	Mounting Hole
311-010-6040G	N0. 060A

- See page 78 for mounting hole layout.
- Part number shown is for standard gold plating.

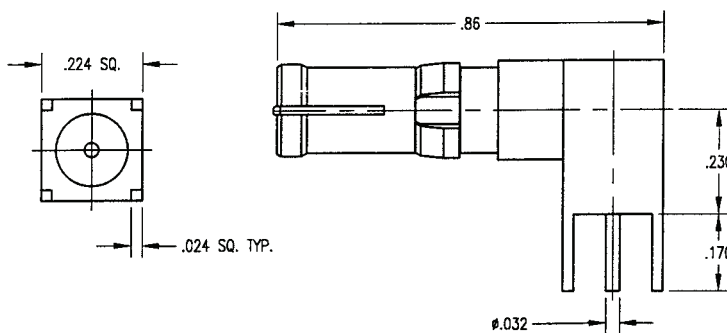
Right Angle Plug



Part Number	Mounting Hole
312-010-6040G	N0. 060A

- See page 78 for mounting hole layout.
- Part number shown is for standard gold plating.

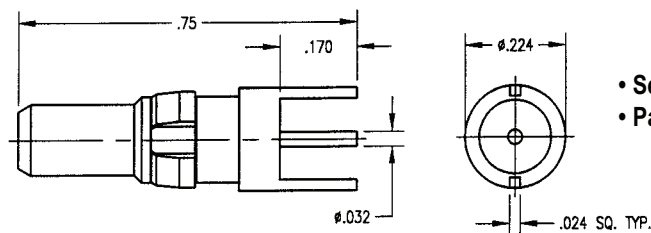
Right Angle Receptacle



Part Number	Mounting Hole
313-010-6040G	N0. 060A

- See page 78 for mounting hole layout.
- Part number shown is for standard gold plating.

Straight Plug



Part Number	Mounting Hole
310-010-6140G	N0. 061

- See page 78 for mounting hole layout.
- Part number shown is for standard gold plating.

Dimensions shown are in inches.

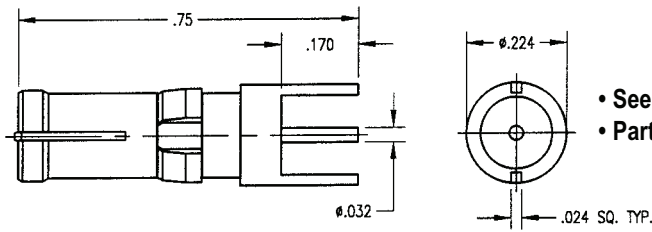
Winchester Electronics

62 Barnes Industrial Road North, Wallingford, Connecticut 06492 Phone:(203)741-5400 Fax:(203)741-5500 www.winchesterelectronics.com

DS/5

RDM 31 SERIES: Printed Circuit Board Contacts

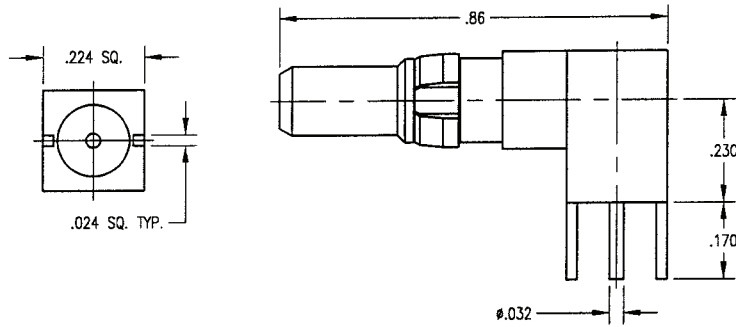
Straight Receptacle



Part Number	Mounting Hole
311-010-6140G	N0. 061

- See page 78 for mounting hole layout.
- Part number shown is for standard gold plating.

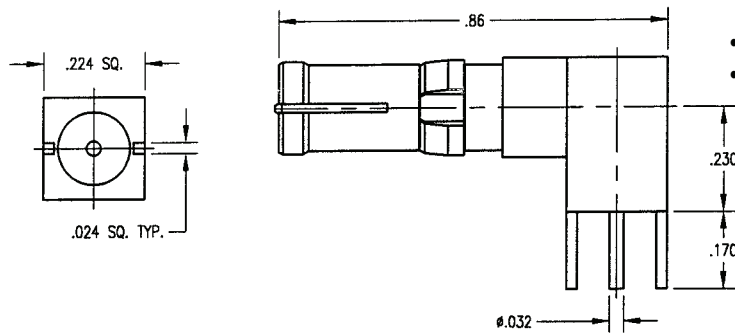
Right Angle Plug



Part Number	Mounting Hole
312-010-6140G	N0. 061

- See page 78 for mounting hole layout.
- Part number shown is for standard gold plating.

Right Angle Receptacle

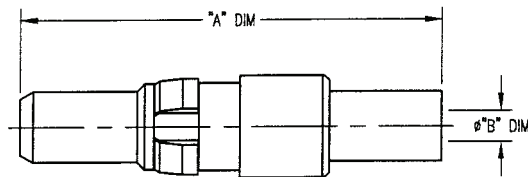


Part Number	Mounting Hole
313-010-6140G	N0. 061

- See page 78 for mounting hole layout.
- Part number shown is for standard gold plating.

RDM 31 SERIES: Crimp / Crimp, Flexible Cable

Straight Plug



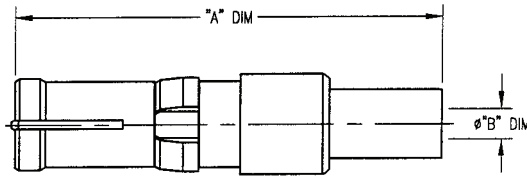
Part Number	Cable	"A" DIM	"B" DIM
310-910-0630G	RG- 316, 188	.93	.067
310-910-0631G	RG- 316 DS	.93	.067
310-910-1160G	RG- 141, 58	1.09	.120
310-910-1161G	RG- 142, 223	1.09	.120

- See page 87 for cable assembly procedures: CAP 9-07
- Part number shown is for standard gold plating.

Dimensions shown are in inches.

RDM 31 SERIES: Crimp / Crimp, Flexible Cable

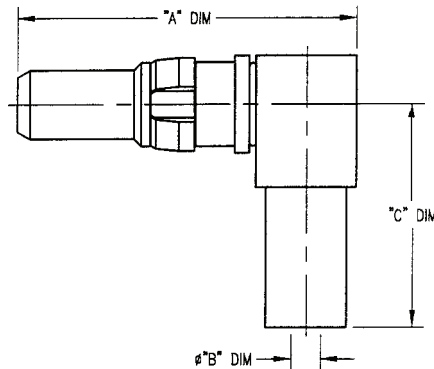
Straight Receptacle



Part Number	Cable	"A" DIM	"B" DIM
311-910-0630G	RG- 316, 188	.89	.067
311-910-0631G	RG- 316 DS	.89	.067
311-910-1160G	RG- 141, 58	1.05	.120
311-910-1161G	RG- 142, 223	1.05	.120

- See page 87 for cable assembly procedures: CAP 9-07
- Part number shown is for standard gold plating.

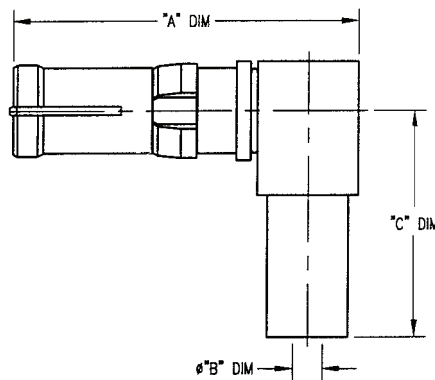
Right Angle Plug



Part Number	Cable	"A" DIM	"B" DIM	"C" DIM
312-910-0630G	RG- 316, 188	.75	.067	.50
312-910-0631G	RG- 316 DS	.75	.067	.50
312-910-1160G	RG- 141, 58	.75	.120	.60
312-910-1161G	RG- 142, 223	.75	.120	.60

- See page 88 for cable assembly procedures: CAP 9-16
- Part number shown is for standard gold plating.

Right Angle Receptacle

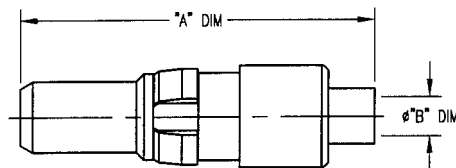


Part Number	Cable	"A" DIM	"B" DIM	"C" DIM
313-910-0630G	RG- 316, 188	.77	.067	.50
313-910-0631G	RG- 316 DS	.77	.067	.50
313-910-1160G	RG- 141, 58	.77	.120	.60
313-910-1161G	RG-142, 223	.77	.120	.60

- See page 88 for cable assembly procedures: CAP 9-16
- Part number shown is for standard gold plating.

RDM 31 SERIES: Solder / Solder, Semi-Rigid Cable

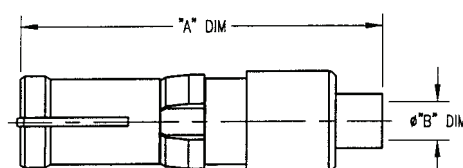
Straight Plug



Part Number	Cable	"A" DIM	"B" DIM
310-510-0850G	RG- 405 (.085 SR)	.79	.090
310-510-1410G	RG- 402 (.141 SR)	.79	.148

- See page 83 for cable assembly procedures: CAP 5-15
- Part number shown is for standard gold plating.

Straight Receptacle



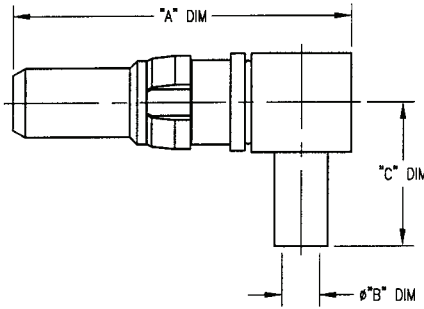
Part Number	Cable	"A" DIM	"B" DIM
311-510-0850G	RG- 405 (.085 SR)	.75	.090
311-510-1410G	RG- 402 (.141 SR)	.75	.148

- See page 83 for cable assembly procedures: CAP 5-15
- Part number shown is for standard gold plating.

Dimensions shown are in inches.

RDM 31 SERIES: Solder / Solder, Semi-Rigid Cable

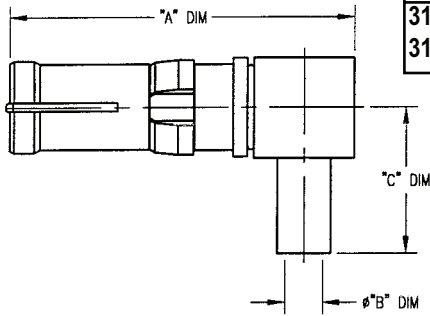
Right Angle Plug



Part Number	Cable	"A" DIM	"B" DIM	"C" DIM
312-510-0850G	RG- 405 (.085 SR)	.75	.090	.31
312-510-1410G	RG- 402 (.141 SR)	.75	.148	.31

- See page 84 for cable assembly procedure: CAP 5-16
- Part number shown is for standard gold plating.

Right Angle Receptacle



Part Number	Cable	"A" DIM	"B" DIM	"C" DIM
313-510-0850G	RG- 405 (.085 SR)	.77	.090	.31
313-510-1410G	RG- 402 (.141 SR)	.77	.148	.31

- See page 84 for cable assembly procedures: CAP 5-16
- Part number shown is for standard gold plating.

Dimensions shown are in inches.

RDM: Specifications & Interface Dimensions

MECHANICAL:

Materials:

Bodies, Plugs: Brass per ASTM B16, 1/2 HD
Bodies, Receptacles: Beryllium Copper per ASTM B196
Female Contacts: Beryllium Copper per ASTM B196
Male Contacts: Brass per ASTM B16, 1/2 HD
Insulators: Teflon per ASTM D1710
Crimp Ferrule: Annealed Copper Alloy
Clip Ring: Phosphor Bronze per ASTM B103

Finish:

Body: Gold Plated per MIL-G-45204
Center Contact: Gold Plated per MIL-G-45204
Clip Ring: Nickel Plated per QQ-N-290

MATING CHARACTERISTICS:

Receptacles, Outer Contact:

3 lbs. Maximum Insertion on a $.1530 + .0001 / - .0000$ Dia. Pin
and a 4 oz. Minimum Withdrawl on a $.1500 + .0000 / - .0001$
Dia. Pin

Plugs, Center Contact: 16 oz. Maximum Insertion on a $.0410 + .0001 / - .0000$ Dia. Pin
and .5 oz. Minimum Withdrawl on a $.0390 + .0000 / - .0001$ Dia. Pin

Retention in Shell:

Plugs and Receptacles: 15 lbs. Minimum

ELECTRICAL:

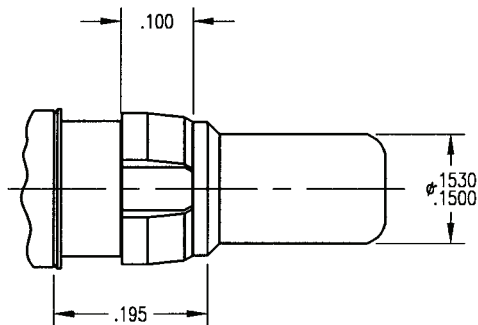
Impedance: 50 Ohms Nominal
Frequency Range: 0 to 900 MHz
Insulation Resistance: 1000 Megaohms Minimum
Contact Resistance: (Milliohms Maximum)
Center Contact: 5.0
Outer Contact: 3.0

ENVIRONMENTAL:

Operating Temperature: -55°C to +125°C
Vibration: MIL-STD-202, Method 204, Test Condition D
Shock: MIL-STD-202, Method 213, Test Condition I
Corrosion Resistance: MIL-STD-202, Method 101, Condition B

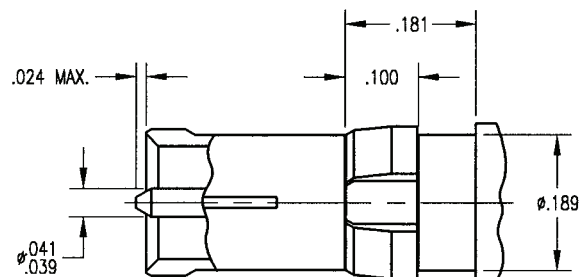
GENERAL INFORMATION:

RDM Coaxial Contacts fit all D-Subminiature Connectors and are available in crimp or solder cable terminations.



Plug Interface

Receptacle Interface

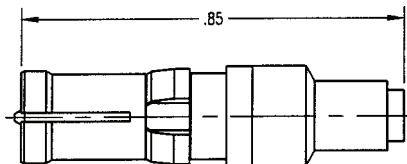


Dimensions shown are in inches.

Winchester Electronics

RDM: Solder / Solder, Semi-Rigid Cable

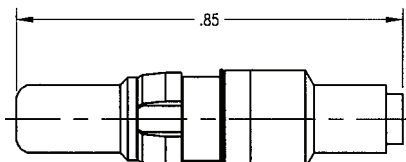
Straight Receptacle



Part Number	Cable
201-510-0470G	.047 SR
201-510-0850G	.085 SR
201-510-1410G	.141 SR

- See page 81 for cable assembly procedures: CAP 5-09
- Part number shown is for standard gold plating.
- For military finish change suffix to "H".
- For commercial finish change suffix to "C".

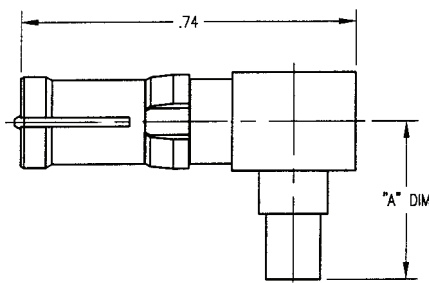
Straight Plug



Part Number	Cable
200-510-0470G	.047 SR
200-510-0850G	.085 SR
200-510-1410G	.141 SR

- See page 81 for cable assembly procedures: CAP 5-09
- Part number shown is for standard gold plating.
- For military finish change suffix to "H".
- For commercial finish change suffix to "C".

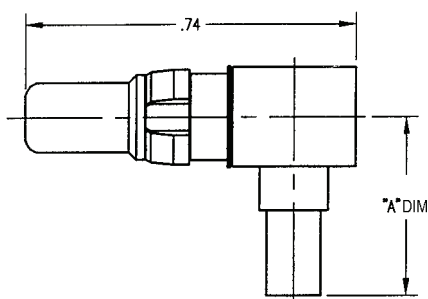
Right Angle Receptacle



Part Number	Cable	"A" DIM
203-510-0470G	.047 SR	.29
203-510-0850G	.085 SR	.35
203-510-1410G	.141 SR	.35

- See page 82 for cable assembly procedures: CAP 5-10
- Part number shown is for standard gold plating.
- For military finish change suffix to "H".
- For commercial finish change suffix to "C".

Right Angle Plug

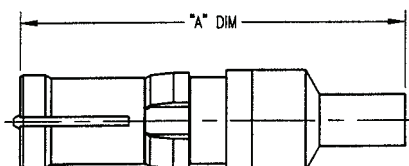


Part Number	Cable	"A" DIM
202-510-0470G	.047 SR	.29
202-510-0850G	.085 SR	.35
202-510-1410G	.141 SR	.35

- See page 82 for cable assembly procedures: CAP 5-10
- Part number shown is for standard gold plating.
- For military finish change suffix to "H".
- For commercial finish change suffix to "C".

RDM: Solder / Solder, Flexible Cable

Straight Receptacle



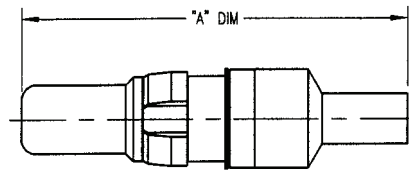
Part Number	Cable	"A" DIM
201-510-0360G	RG- 178, 196	.93
201-510-0630G	RG- 316, 188	.93
201-510-1070G	RG- 180, 195	1.03
201-510-1160G	RG- 141, 58	1.03
201-510-1161G	RG- 142, 223	1.03

- See page 79 for cable assembly procedures: CAP 5-07
- Part number shown is for standard gold plating.
- For military finish change suffix to "H".
- For commercial finish change suffix to "C".

Dimensions shown are in inches.

RDM: Solder / Solder, Flexible Cable

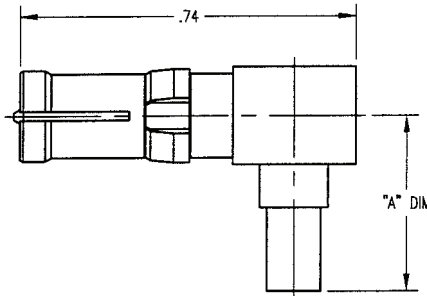
Straight Plug



Part Number	Cable	"A" DIM
200-510-0360G	RG- 178, 196	.93
200-510-0630G	RG- 316, 188	.93
200-510-1070G	RG- 180, 195	1.03
200-510-1160G	RG- 141, 58	1.03
200-510-1161G	RG- 142, 223	1.03

- See page 79 for cable assembly procedures: CAP 5-07
- Part number shown is for standard gold plating.
- For military finish change suffix to "H".
- For commercial finish change suffix to "C".

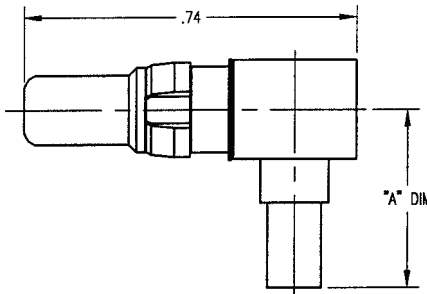
Right Angle Receptacle



Part Number	Cable	"A" DIM
203-510-0360G	RG- 178, 196	.49
203-510-0630G	RG- 316, 188	.49
203-510-1070G	RG- 180, 195	.49
203-510-1160G	RG- 141, 58	.49
203-510-1161G	RG- 142, 223	.49

- See page 80 for cable assembly procedures: CAP 5-08
- Part number shown is for standard gold plating.
- For military finish change suffix to "H".
- For commercial finish change suffix to "C".

Right Angle Plug

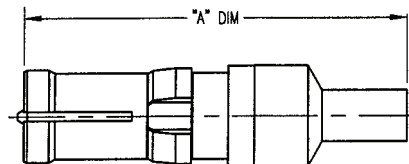


Part Number	Cable	"A" DIM
202-510-0360G	RG- 178, 196	.49
202-510-0630G	RG- 316, 188	.49
202-510-1070G	RG- 180, 195	.60
202-510-1160G	RG- 141, 58	.60
202-510-1161G	RG- 142, 223	.60

- See page 80 for cable assembly procedures: CAP 5-08
- Part number shown is for standard gold plating.
- For military finish change suffix to "H".
- For commercial finish change suffix to "C".

RDM: Solder / Crimp, Flexible Cable

Straight Receptacle



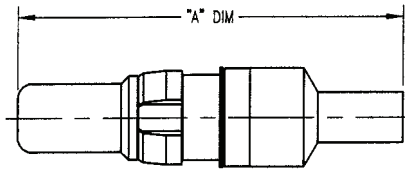
Part Number	Cable	"A" DIM
201-910-0360G	RG- 178, 196	.93
201-910-0630G	RG- 316, 188	.93
201-910-1070G	RG- 180, 195	1.03
201-910-1160G	RG- 141, 58	1.03
201-910-1161G	RG- 142, 223	1.03

- See page 85 for cable assembly procedures: CAP 9-01
- Part number shown is for standard gold plating.
- For military finish change suffix to "H".
- For commercial finish change suffix to "C".

Dimensions shown are in inches.

RDM: Solder / Crimp, Flexible Cable

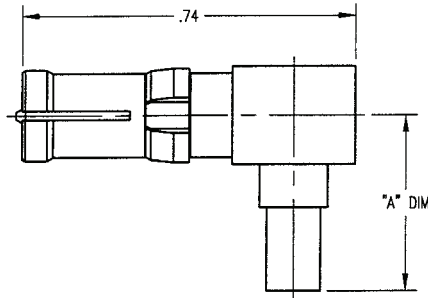
Straight Plug



Part Number	Cable	"A" DIM
200-910-0360G	RG- 178, 196	.93
200-910-0630G	RG- 316, 188	.93
200-910-1070G	RG- 180, 195	1.03
200-910-1160G	RG- 141, 58	1.03
200-910-1161G	RG- 142, 223	1.03

- See page 85 for cable assembly procedures: CAP 9-01
- Part number shown is for standard gold plating.
- For military finish change suffix to "H".
- For commercial finish change suffix to "C".

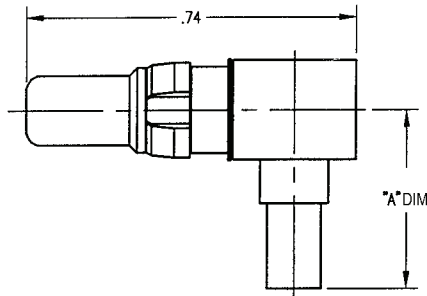
Right Angle Receptacle



Part Number	Cable	"A" DIM
203-910-0360G	RG- 178, 196	.49
203-910-0630G	RG- 316, 188	.49
203-910-1070G	RG- 180, 195	.60
203-910-1160G	RG- 141, 58	.60
203-910-1161G	RG- 142, 223	.60

- See page 86 for cable assembly procedures: CAP 9-02
- Part number shown is for standard gold plating.
- For military finish change suffix to "H".
- For commercial finish change suffix to "C".

Right Angle Plug

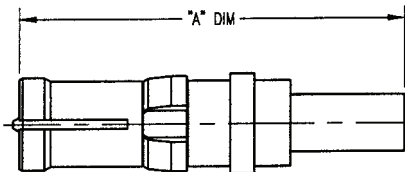


Part Number	Cable	"A" DIM
202-910-0360G	RG- 178, 196	.49
202-910-0630G	RG- 316, 188	.49
202-910-1070G	RG- 180, 195	.60
202-910-1160G	RG- 141, 58	.60
202-910-1161G	RG- 142, 223	.60

- See page 86 for cable assembly procedures: CAP 9-02
- Part number shown is for standard gold plating.
- For military finish change suffix to "H".
- For commercial finish change suffix to "C".

RDM: Crimp / Crimp, Flexible Cable

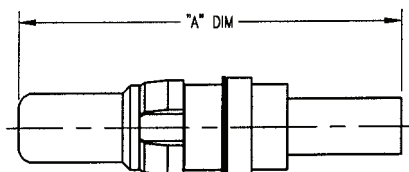
Straight Receptacle



Part Number	Cable	"A" DIM
261-910-0630G	RG- 316, 188	.84
261-910-1070G	RG- 180, 195	1.00
261-910-1160G	RG- 141, 58	1.00
261-910-1161G	RG- 142, 223	1.00

- See page 87 for cable assembly procedures: CAP 9-07
- Part number shown is for standard gold plating.
- For military finish change suffix to "H".
- For commercial finish change suffix to "C".

Straight Plug



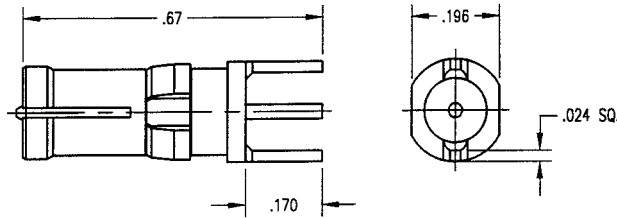
Part Number	Cable	"A" DIM
260-910-0630G	RG- 316, 188	.86
260-910-1070G	RG- 180, 195	1.01
260-910-1160G	RG- 141, 58	1.01
260-910-1161G	RG- 142, 223	1.01

- See page 87 for cable assembly procedures: CAP 9-07
- Part number shown is for standard gold plating.
- For military finish change suffix to "H".
- For commercial finish change suffix to "C".

Dimensions shown are in inches.

RDM: Printed Circuit Board Contacts

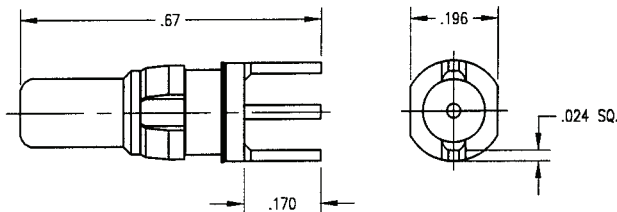
Straight Receptacle



Part Number	Mounting Hole
201-010-6140G	NO. 061

- See page 78 for mounting hole layout.
- Part number shown is for standard gold plating.
- For military finish change suffix to "H".
- For commercial finish change suffix to "C".

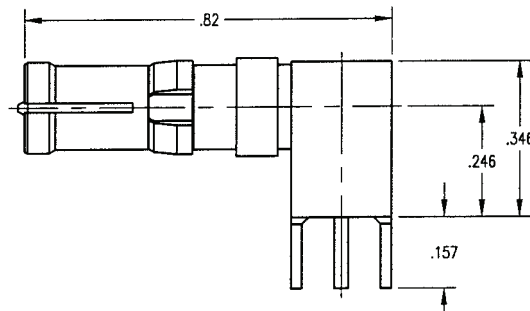
Straight Plug



Part Number	Mounting Hole
200-010-6140G	NO. 061

- See page 78 for mounting hole layout.
- Part number shown is for standard gold plating.
- For military finish change suffix to "H".
- For commercial finish change suffix to "C".

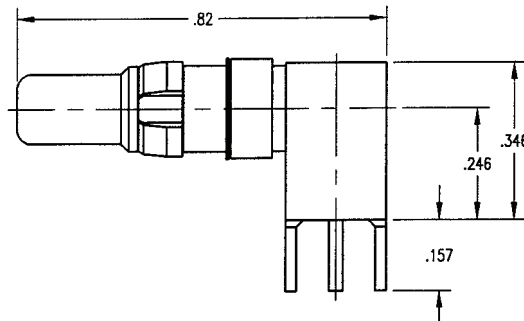
Right Angle Receptacle



Part Number	Mounting Hole
203-010-6140G	NO. 061

- See page 78 for mounting hole layout.
- Part number shown is for standard gold plating.
- For military finish change suffix to "H".
- For commercial finish change suffix to "C".

Right Angle Plug

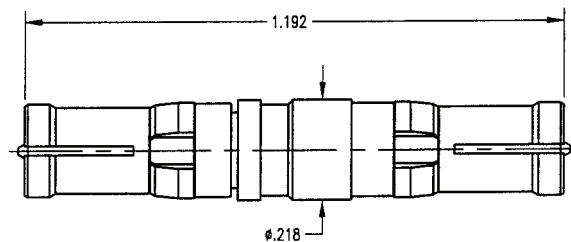


Part Number	Mounting Hole
202-010-6140G	NO. 061

- See page 78 for mounting hole layout.
- Part number shown is for standard gold plating.
- For military finish change suffix to "H".
- For commercial finish change suffix to "C".

RDM: Same - Series Adapters

Receptacle / Receptacle



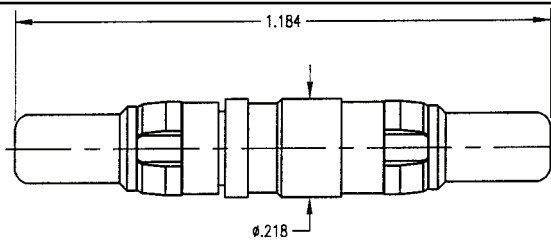
Part Number
201-201-0000G

- Part number shown is for standard gold plating.
- For military finish change suffix to "H".
- For commercial finish change suffix to "C".

Dimensions shown are in inches.

RDM: Same - Series Adapters

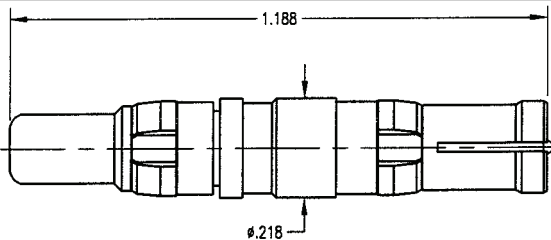
Plug / Plug



Part Number
200-200-0000G

- Part number shown is for standard gold plating.
- For military finish change suffix to "H".
- For commercial finish change suffix to "C".

Plug / Receptacle

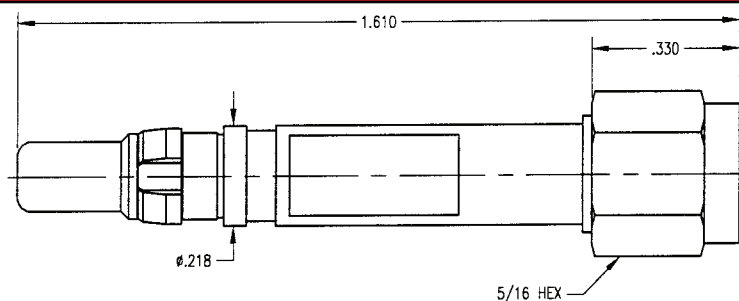


Part Number
200-201-0000G

- Part number shown is for standard gold plating.
- For military finish change suffix to "H".
- For commercial finish change suffix to "C".

RDM: Between Series Adapters

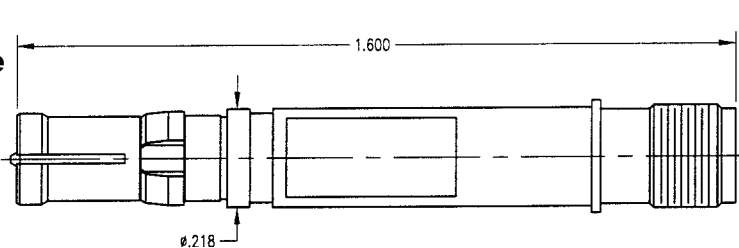
RDM Plug / SMA Plug



Part Number
200-350-0000H

- Part number shown is for gold plating.
- For nickel plate change suffix to "N"

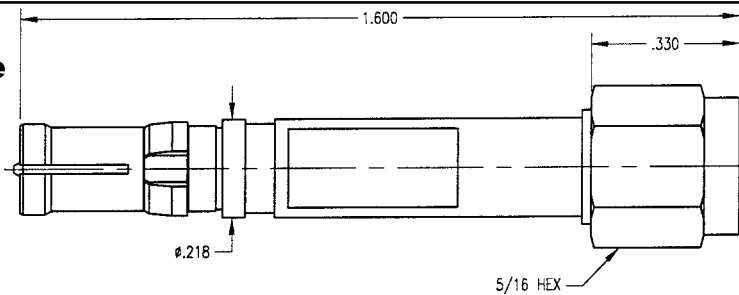
RDM Receptacle SMA Jack



Part Number
201-351-0000H

- Part number shown is for gold plating.
- For nickel plate change suffix to "N"

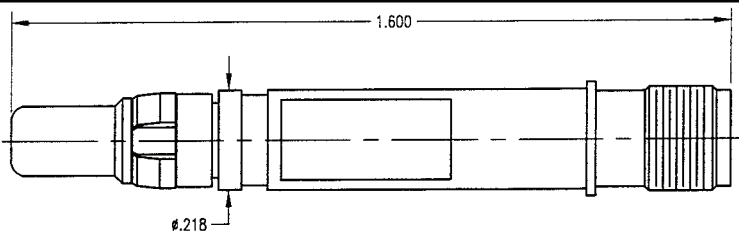
RDM Receptacle SMA Plug



Part Number
201-350-0000H

- Part number shown is for gold plating.
- For nickel plate change suffix to "N"

RDM Plug / SMA Jack



Part Number
200-351-0000H

- Part number shown is for gold plating.
- For nickel plate change suffix to "N"

Dimensions shown are in inches.

Winchester Electronics

RDM - HF: Specifications & Interface Dimensions

MECHANICAL:

Materials:

Bodies, Plugs: Brass per ASTM B16, 1/2 HD

Bodies, Receptacles: Beryllium Copper per ASTM B196

Female Contacts: Beryllium Copper per ASTM B196

Male Contacts: Brass per ASTM B16, 1/2 HD

Insulators: Teflon per ASTM D1710

Crimp Ferrule: Annealed Copper Alloy

Clip Ring: Phosphor Bronze per ASTM B103

Finish:

Body: Gold Plated per MIL-G-4504

Center Contact: Gold Plated per MIL-G-45204

Clip Ring: Nickel Plated per QQ-N-290

MATING CHARACTERISTICS

Receptacles, Outer Contact:

3 lbs. Maximum Insertion on a $.1530 +.0001 / - .0000$ Dia.

Pin and a 4 oz. Minimum Withdrawl on a $.1500 + .0000 /$

$.0001$ Dia. Pin

Plugs, Center Contact:

16oz. Maximum Insertion on a $.0410 + .0001 / - .0000$ Dia.

Pin and a 5 oz. Minimum Withdrawl on a $.0390 + .0000 /$

$-.0001$ Dia. Pin

Retention in Shell: 15 lbs. Minimum

ELECTRICAL:

Impedance: 50 Ohms Nominal

Frequency Range: 0 to 1500 MHz

Insulation Resistance: 1000 Megaohms Minimum

Contact Resistance: (Milliohms Maximum)

Center Contact: 5.0

Outer Contact: 3.0

Dielectric Withstanding Voltage (DWV):

Straight: 1000 VRMS

Right Angle: 800 VRMS

Voltage Standing Wave Ratio:

1.15 Maximum from 0 to 1200 MHz

1.35 Maximum from 1200 to 1500 MHz

ENVIRONMENTAL:

Operating Temperature: -55°C to $+125^{\circ}\text{C}$

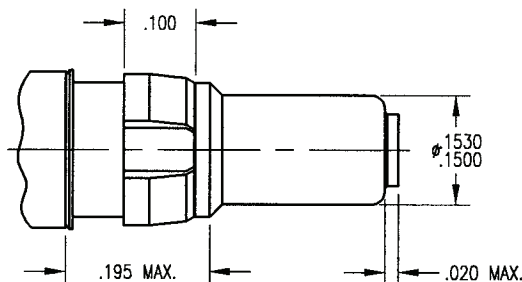
Vibration: MIL-STD-202, Method 204, Test Condition D

Shock: MIL-STD-202, Method 213, Test Condition I

Corrosion Resistance: MIL-STD-202, Method 101, Condition B

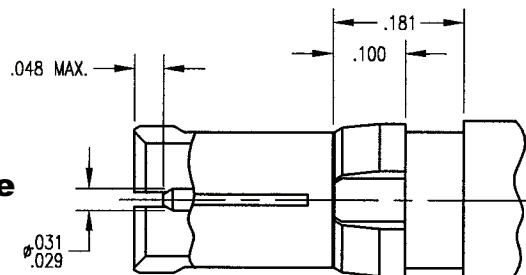
GENERAL INFORMATION:

RDM Coaxial Contacts fit all D-Subminiature Connectors and are interchangeable with other manufacturer's product. Available in crimp or solder cable terminations.



Plug Interface

Receptacle Interface

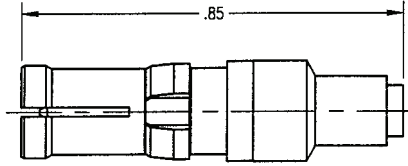


Dimensions shown are in inches.

Winchester Electronics

RDM - HF: Solder / Solder, Semi-Rigid Cable

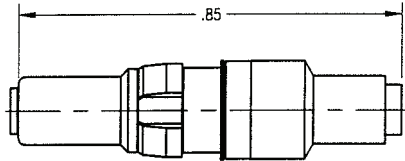
Straight Receptacle



Part Number	Cable
211-510-0470G	.047 SR
211-510-0850G	.085 SR
211-510-1410G	.141 SR

- See page 81 for cable assembly procedures: CAP 5-09
- Part number shown is for standard gold plating.
- For military finish change suffix to "H"
- For commercial finish change suffix to "C"

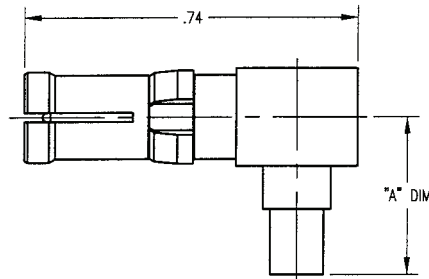
Straight Plug



Part Number	Cable
210-510-0470G	.047 SR
210-510-0850G	.085 SR
210-510-1410G	.141 SR

- See page 81 for cable assembly procedures: CAP 5-09
- Part number shown is for standard gold plating.
- For military finish change suffix to "H"
- For commercial finish change suffix to "C"

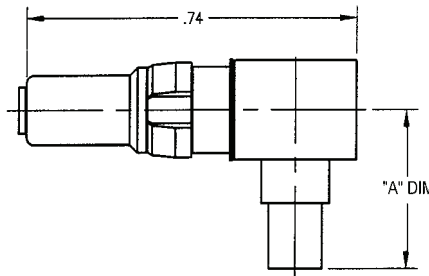
Right Angle Receptacle



Part Number	Cable	"A" DIM
213-510-0470G	.047 SR	.29
213-510-0850G	.085 SR	.35
213-510-1410G	.141 SR	.35

- See page 82 for cable assembly procedures: CAP 5-10
- Part number shown is for standard gold plating.
- For military finish change suffix to "H"
- For commercial finish change suffix to "C"

Right Angle Plug

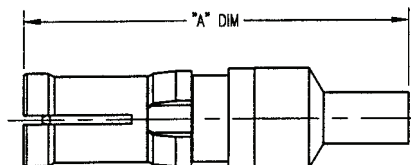


Part Number	Cable	"A" DIM
212-510-0470G	.047 SR	.29
212-510-0850G	.085 SR	.35
212-510-1410G	.141 SR	.35

- See page 82 for cable assembly procedures: CAP 5-10
- Part number shown is for standard gold plating.
- For military finish change suffix to "H"
- For commercial finish change suffix to "C"

RDM - HF: Solder / Crimp, Flexible Cable

Straight Receptacle



Part Number	Cable	"A" DIM
211-910-0360G	RG- 178, 196	.93
211-910-0630G	RG- 316, 188	.93
211-910-1070G	RG- 180, 195	1.03
211-910-1160G	RG- 141, 58	1.03
211-910-1161G	RG- 142, 223	1.03

- See page 85 for cable assembly procedures: CAP 9-01
- Part number shown is for standard gold plating.
- For military finish change suffix to "H"
- For commercial finish change suffix to "C"

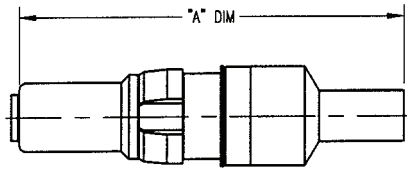
Dimensions shown are in inches.

Winchester Electronics

62 Barnes Industrial Road North, Wallingford, Connecticut 06492 Phone:(203)741-5400 Fax:(203)741-5500 www.winchesterelectronics.com

RDM - HF: Solder / Crimp, Flexible Cable

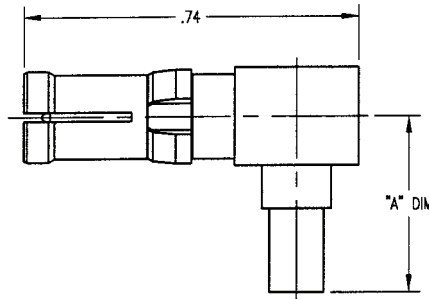
Straight Plug



Part Number	Cable	"A" DIM
210-910-0360G	RG- 178, 196	.93
210-910-0630G	RG- 316, 188	.93
210-910-1070G	RG- 180, 195	1.03
210-910-1160G	RG- 141, 58	1.03
210-910-1161G	RG- 142, 223	1.03

- See page 85 for cable assembly procedures: CAP 9-01
- Part number shown is for standard gold plating.
- For military finish change suffix to "H"
- For commercial finish change suffix to "C"

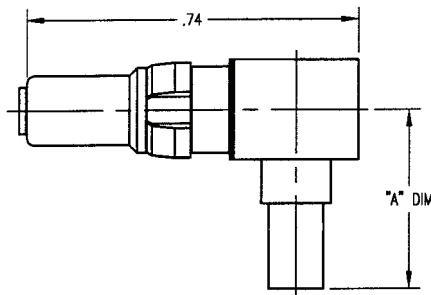
Right Angle Receptacle



Part Number	Cable	"A" DIM
213-910-0360G	RG- 178, 196	.49
213-910-0630G	RG- 316, 188	.49
213-910-1070G	RG- 180, 195	.60
213-910-1160G	RG- 141, 58	.60
213-910-1161G	RG- 142, 223	.60

- See page 86 for cable assembly procedures: CAP 9-02
- Part number shown is for standard gold plating.
- For military finish change suffix to "H"
- For commercial finish change suffix to "C"

Right Angle Plug

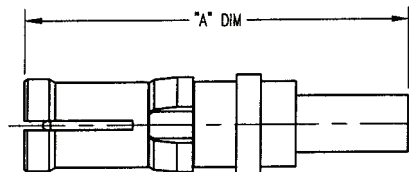


Part Number	Cable	"A" DIM
212-910-0360G	RG- 178, 196	.49
212-910-0630G	RG- 316, 188	.49
212-910-1070G	RG- 180, 195	.60
212-910-1160G	RG- 141, 58	.60
212-910-1161G	RG- 142, 223	.60

- See page 86 for cable assembly procedures: CAP 9-02
- Part number shown is for standard gold plating.
- For military finish change suffix to "H"
- For commercial finish change suffix to "C"

RDM - HF: Crimp / Crimp, Flexible Cable

Straight Receptacle



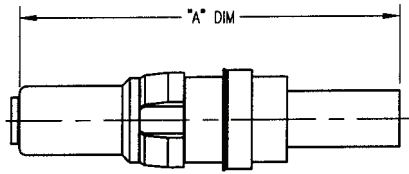
Part Number	Cable	"A" DIM
291-910-0630G	RG- 316, 188	.84
291-910-1070G	RG- 180, 195	1.00
291-910-1160G	RG- 141, 58	1.00
291-910-1161G	RG 142, 223	1.00

- See page 87 for cable assembly procedures: CAP 9-07
- Part number shown is for standard gold plating.
- For military finish change suffix to "H"
- For commercial finish change suffix to "C"

Dimensions shown are in inches.

RDM - HF: Crimp / Crimp, Flexible Cable

Straight Plug

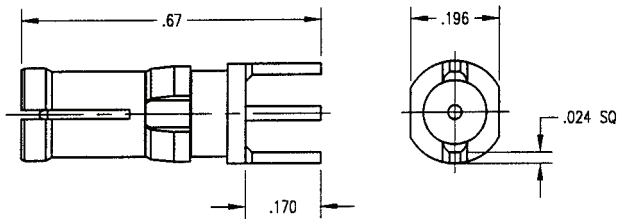


Part Number	Cable	"A" DIM
290-910-0630G	RG- 316, 188	.86
290-910-1070G	RG- 180, 195	1.01
290-910-1160G	RG- 141, 58	1.01
290-910-1161G	RG- 142, 223	1.01

- See page 87 for cable assembly procedures: CAP 9-07
- Part number shown is for standard gold plating.
- For military finish change suffix to "H"
- For commercial finish change suffix to "C"

RDM - HF: Printed Circuit Board Contacts

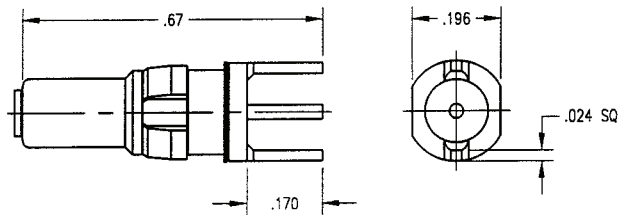
Straight Receptacle



Part Number	Mounting Hole
211-010-6140G	N0. 061

- See page 78 for mounting hole layout.
- Part number shown is for standard gold plating.
- For military finish change suffix to "H"
- For commercial finish change suffix to "C"

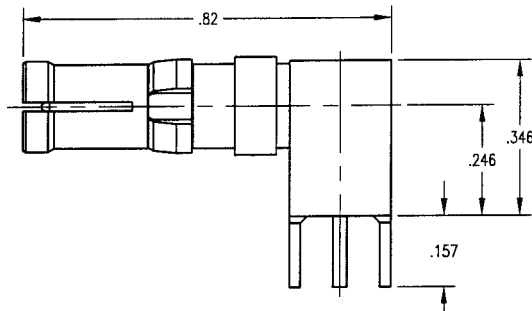
Straight Plug



Part Number	Mounting Hole
210-010-6140G	N0. 061

- See page 78 for mounting hole layout.
- Part number shown is for standard gold plating.
- For military finish change suffix to "H"
- For commercial finish change suffix to "C"

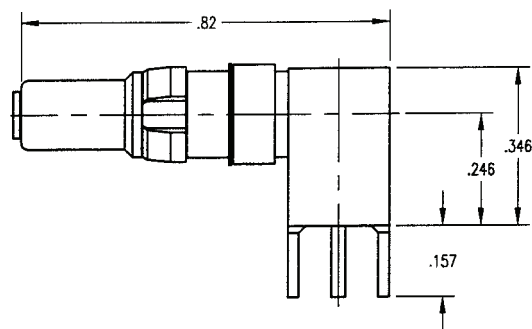
Right Angle Receptacle



Part Number	Mounting Hole
213-010-6140G	N0. 061

- See page 78 for mounting hole layout.
- Part number shown is for standard gold plating.
- For military finish change suffix to "H"
- For commercial finish change suffix to "C"

Right Angle Plug



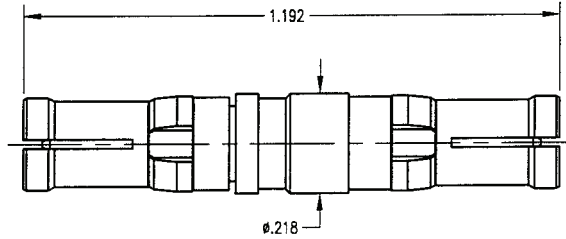
Part Number	Mounting Hole
212-010-6140G	N0. 061

- See page 78 for mounting hole layout.
- Part number shown is for standard gold plating.
- For military finish change suffix to "H"
- For commercial finish change suffix to "C"

Dimensions shown are in inches.

RDM - HF: Same - Series Adapters

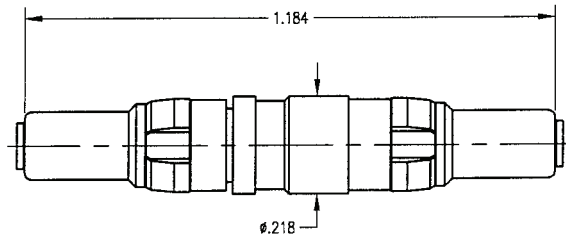
Receptacle / Receptacle



Part Number
211-211-0000G

- Part number shown is for standard gold plating.
- For military finish change suffix to "H"
- For commercial finish change suffix to "C"

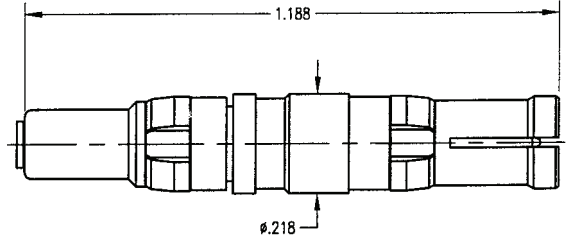
Plug / Plug



Part Number
210-210-0000G

- Part number shown is for standard gold plating.
- For military finish change suffix to "H"
- For commercial finish change suffix to "C"

Plug / Receptacle



Part Number
210-211-0000G

- Part number shown is for standard gold plating.
- For military finish change suffix to "H"
- For commercial finish change suffix to "C"

Dimensions shown are in inches.

RDM 75 OHM: Specifications & Interface Dimensions

MECHANICAL:

Materials:

Bodies, Plugs: Brass per ASTM B16, 1/2 HD
Bodies Receptacles: Beryllium Copper per ASTM B196
Female Contacts: Beryllium Copper per ASTM B196
Male Contacts: Brass per ASTM B16, 1/2/ HD
Insulators: Teflon per ASTM D1710
Crimp Ferrule: Annealed Copper Alloy
Clip Ring: Phosphor Bronze per ASTM B103

Finish:

Body: Gold Plated per MIL-STD-45204
Center Contact: Gold Plated per MIL-STD-45204
Clip Ring: Nickel Plated per QQ-N-290

MATING CHARACTERISTICS:

Receptacles, Outer Contact: 3 lbs. Maximum Insertion on a $.1530 +.0001 / -.0000$ Dia. Pin and 4 oz. Minimum Withdrawal on a $.1500 +.0000 / -.0001$ Dia. Pin

Plugs, Center Contact: 16 oz. Maximum Insertion on a $.0419 +.0001 / -.0000$ Dia. Pin and 5 oz. Minimum Withdrawal on a $.0390 +.0000 / -.0001$ Dia. Pin

Retention in Shell: 15 lbs. Minimum

ELECTRICAL:

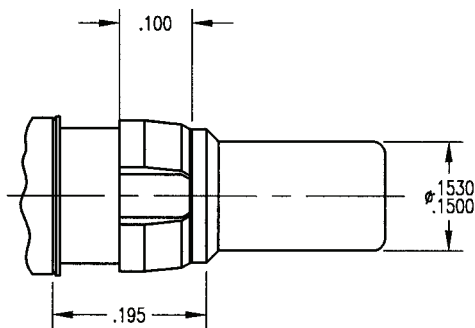
Impedance: 75 Ohm Nominal
Frequency Range: 0 - 2 GHz
Insulation Resistance: 1000 Megaohms Minimum
Contact Resistance: (Milliohms Maximum)
Center Contact: 5.0
Outer Contact: 3.0
Dielectric Withstanding Voltage (DWV):
Straight: 1000 VRMS
Right Angle: 800 VRMS
Voltage Standing Wave Ratio:
1.05 Maximum from 0 to 1000 MHz
1.25 Maximum from 1000 to 2000 MHz

ENVIRONMENTAL:

Operating Temperature: -55°C to $+125^{\circ}\text{C}$
Vibration: MIL-STD-202, Method 204, Test Condition D
Shock: MIL-STD-202, Method 213, Test Condition I
Corrosion Resistance: MIL-STD-202, Method 101, Condition B

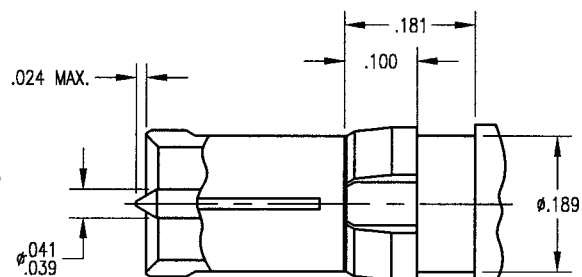
GENERAL INFORMATION:

RDM Coaxial Contacts fit all D-Subminiature Connectors and are interchangeable with other manufacturer's product. Available in crimp or solder cable versions.



Plug Interface

Receptacle Interface

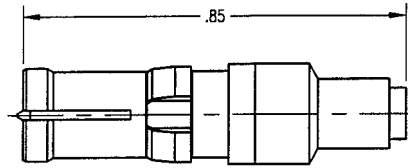


Dimensions shown are in inches.

Winchester Electronics

RDM 75 OHM: Solder / Solder, Semi-Rigid Cable

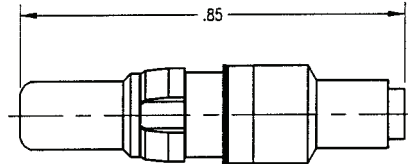
Straight Receptacle



Part Number	Cable
271-510-0470G	.047 SR
271-510-0850G	.085 SR
271-510-1410G	.141 SR

- See page 81 for cable assembly procedures: CAP 5-09
- Part number shown is for standard gold plating.
- For military finish change suffix to "H"
- For commercial finish change suffix to "C"

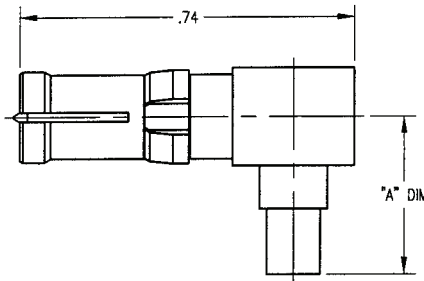
Straight Plug



Part Number	Cable
270-510-0470G	.047 SR
270-510-0850G	.085 SR
270-510-1410G	.141 SR

- See page 81 for cable assembly procedures: CAP 5-09
- Part number shown is for standard gold plating.
- For military finish change suffix to "H"
- For commercial finish change suffix to "C"

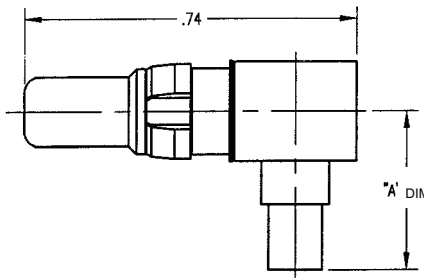
Right Angle Receptacle



Part Number	Cable	"A" DIM
273-510-0470G	.047 SR	.29
273-510-0850G	.085 SR	.35
273-510-1410G	.141 SR	.35

- See page 82 for cable assembly procedures: CAP 5-10
- Part number shown is for standard gold plating.
- For military finish change suffix to "H"
- For commercial finish change suffix to "C"

Right Angle Plug

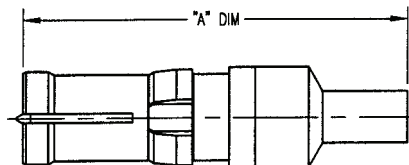


Part Number	Cable	"A" DIM
272-510-0470G	.047 SR	.29
272-510-0850G	.085 SR	.35
272-510-1410G	.141 SR	.35

- See page 82 for cable assembly procedures: CAP 5-10
- Part number shown is for standard gold plating.
- For military finish change suffix to "H"
- For commercial finish change suffix to "C"

RDM 75 OHM: Solder / Crimp, Flexible Cable

Straight Receptacle



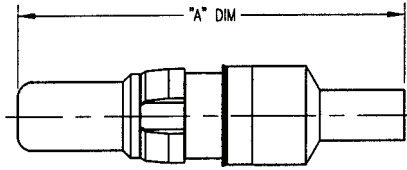
Part Number	Cable	"A" DIM
271-910-0630G	RG- 179	.93
271-910-1070G	BELDEN 8218	1.03

- See page 85 for cable assembly procedures: CAP 9-01
- Part number shown is for standard gold plating.
- For military finish change suffix to "H"
- For commercial finish change suffix to "C"

Dimensions shown are in inches.

RDM 75 OHM: Solder / Crimp, Flexible Cable

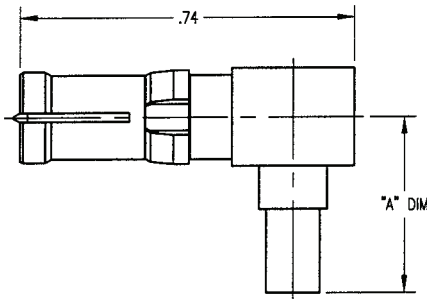
Straight Plug



Part Number	Cable	"A" DIM
270-910-0630G	RG- 179	.93
270-910-1070G	BELDEN 8218	1.03

- See page 85 for cable assembly procedures: CAP 9-01
- Part number shown is for standard gold plating.
- For military finish change suffix to "H"
- For commercial finish change suffix to "C"

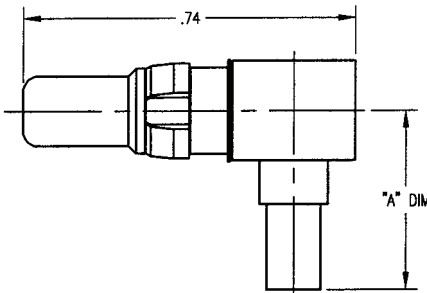
Right Angle Receptacle



Part Number	Cable	"A" DIM
273-910-0630G	RG- 179	.49
273-910-1070G	BELDEN 8218	.60

- See page 86 for cable assembly procedures: CAP 9-02
- Part number shown is for standard gold plating.
- For military finish change suffix to "H"
- For commercial finish change suffix to "C"

Right Angle Plug

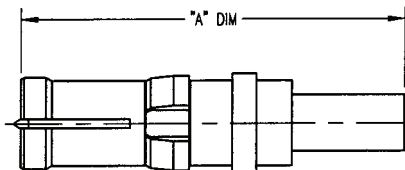


Part Number	Cable	"A" DIM
272-910-0630G	RG- 179	.49
272-910-1070G	BELDEN 8218	.60

- See page 86 for cable assembly procedures: CAP 9-02
- Part number shown is for standard gold plating.
- For military finish change suffix to "H"
- For commercial finish change suffix to "C"

RDM 75 OHM: Crimp / Crimp, Flexible Cable

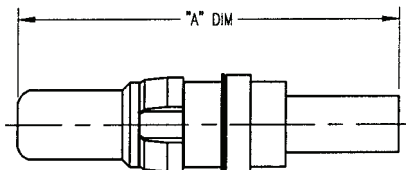
Straight Receptacle



Part Number	Cable	"A" DIM
241-910-0630G	RG- 179	.84
241-910-1070G	BELDEN 8218	1.00

- See page 87 for cable assembly procedures: CAP 9-07
- Part number shown is for standard gold plating.
- For military finish change suffix to "H"
- For commercial finish change suffix to "C"

Straight Plug



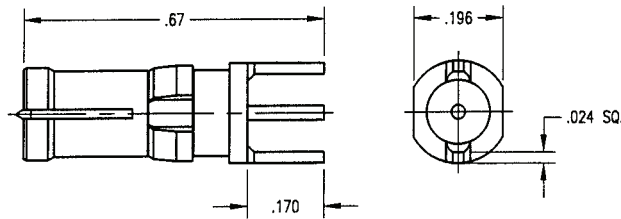
Part Number	Cable	"A" DIM
240-910-0630G	RG- 179	.86
240-910-1070G	BELDEN 8218	1.01

- See page 87 for cable assembly procedures: CAP 9-07
- Part number shown is for standard gold plating.
- For military finish change suffix to "H"
- For commercial finish change suffix to "C"

Dimensions shown are in inches.

RDM 75 OHM: Printed Circuit Board Contacts

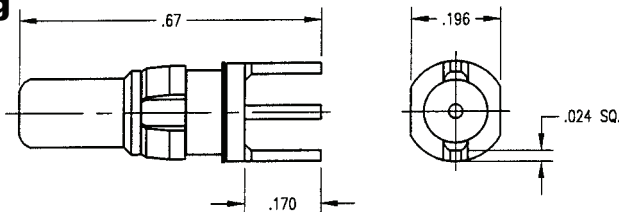
Straight Receptacle



Part Number	Mounting Hole
271-010-6140G	No. 061

- See page 78 for mounting hole layout.
- Part number shown is for standard gold plating.
- For military finish change suffix to "H"
- For commercial finish change suffix to "C"

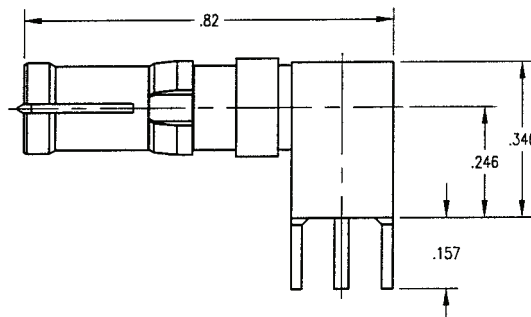
Straight Plug



Part Number	Mounting Hole
270-010-6140G	No. 061

- See page 78 for mounting hole layout.
- Part number shown is for standard gold plating.
- For military finish change suffix to "H"
- For commercial finish change suffix to "C"

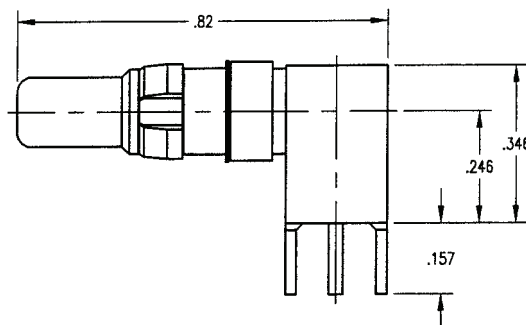
Right Angle Receptacle



Part Number	Mounting Hole
273-010-6140G	No. 061

- See page 78 for mounting hole layout.
- Part number shown is for standard gold plating.
- For military finish change suffix to "H"
- For commercial finish change suffix to "C"

Right Angle Plug

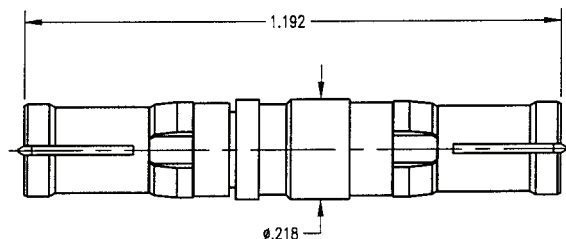


Part Number	Mounting Hole
272-010-6140G	No. 061

- See page 78 for mounting hole layout.
- Part number shown is for standard gold plating.
- For military finish change suffix to "H"
- For commercial finish change suffix to "C"

RDM 75 OHM: Same - Series Adapters

Receptacle / Receptacle



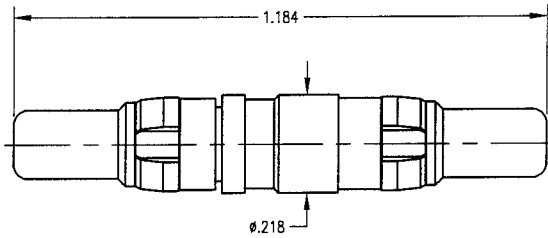
Part Number
271-271-0000G

- Part number shown is for standard gold plating.
- For military finish change suffix to "H"
- For commercial finish change suffix to "C"

Dimensions shown are in inches.

RDM 75 OHM: Same - Series Adapters

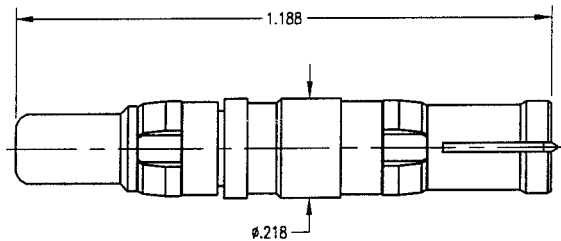
Plug / Plug



Part Number
270-270-0000G

- Part number shown is for standard gold plating.
- For military finish change suffix to "H"
- For commercial finish change suffix to "C"

Plug / Receptacle



Part Number
270-271-0000G

- Part number shown is for standard gold plating.
- For military finish change suffix to "H"
- For commercial finish change suffix to "C"

Dimensions shown are in inches.

RDM HIGH POWER: Specifications & Interface Dimensions

MECHANICAL:

Materials:

- Bodies, Plugs: Brass per ASTM B16, 1/2 HD
- Bodies Receptacles: Beryllium Copper per ASTM B196
- Spring Washers: Phosphor Bronze per ASTM B103
- Clip Ring: Phosphor Bronze per ASTM B103

Finish:

- Bodies: Gold Plated per MIL-STD-45204
- Clip Ring: Nickel Plated per QQ-N-290

MATING CHARACTERISTICS:

Receptacles, Outer Contact: 3 lbs. Maximum Insertion on a $.1530 +.0001 / -.0000$ Dia. Pin and a 4 oz. Minimum Withdrawl on a $.1500 +.0000 / -.0001$ Dia. Pin

Retention in Shell: 15 lbs. Minimum

ELECTRICAL:

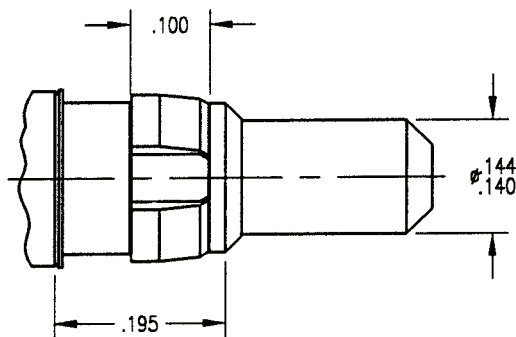
- Current Rating: 10, 20, 40 AMPS
- Contact Resistance: 3.0 Milliohms

ENVIRONMENTAL:

- Operating Temperature: -55°C to $+125^{\circ}\text{C}$
- Vibration: MIL-STD-202, Method 204, Test Condition D
- Shock: MIL-STD-202, Method 213, Test Condition I
- Corrosion Resistance: MIL-STD-202, Method 101, Condition B

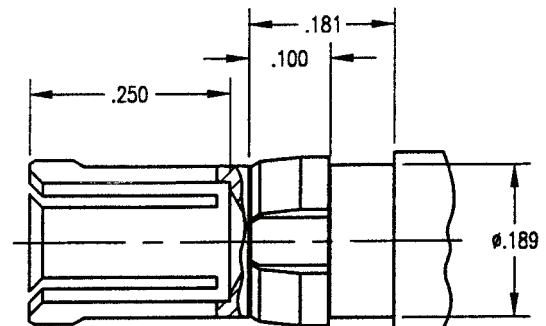
GENERAL INFORMATION:

RDM Coaxial Contacts fit all D-Subminiature Connectors and are interchangeable with other manufacturer's product. Available in crimp or solder cable terminations.



Plug Interface

Receptacle Interface

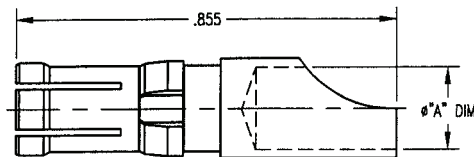


Dimensions shown are in inches.

Winchester Electronics

RDM HIGH POWER: Solder, Flexible Cable

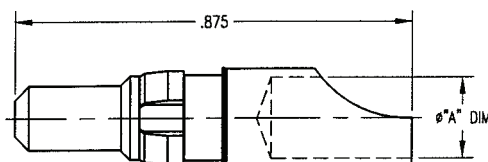
Straight Receptacle



Part Number	Wire Gauge	Current Rating	"A" DIM
221-510-0000G	# 8	40 AMP	.188
221-510-0001G	# 12	20 AMP	.110
221-510-0002G	# 16	10 AMP	.069

- Part number shown is for standard gold plating.
- For military finish change suffix to "H"
- For commercial finish change suffix to "C"

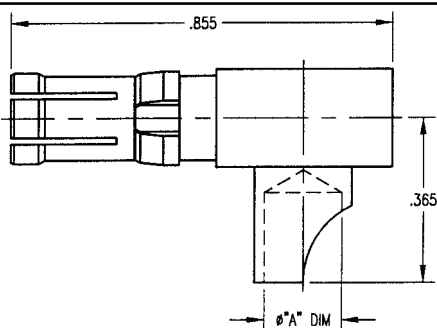
Straight Plug



Part Number	Wire Gauge	Current Rating	"A" DIM
220-510-0000G	# 8	40 AMP	.188
220-510-0001G	# 12	20 AMP	.110
220-510-0002G	# 16	10 AMP	.069

- Part number shown is for standard gold plating.
- For military finish change suffix to "H"
- For commercial finish change suffix to "C"

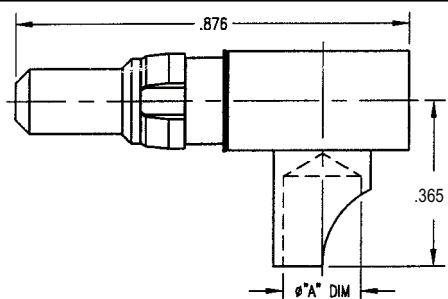
Right Angle Receptacle



Part Number	Wire Gauge	Current Rating	"A" DIM
223-510-0000G	# 8	40 AMP	.188
223-510-0001G	# 12	20 AMP	.110
223-510-0002G	# 16	10 AMP	.069

- Part number shown is for standard gold plating.
- For military finish change suffix to "H"
- For commercial finish change suffix to "C"

Right Angle Plug

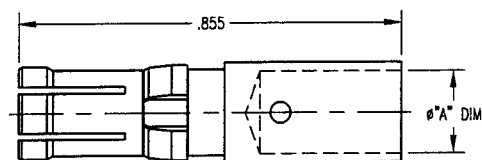


Part Number	Wire Gauge	Current Rating	"A" DIM
222-510-0000G	# 8	40 AMP	.188
222-510-0001G	# 12	20 AMP	.110
222-510-0002G	# 16	10 AMP	.069

- Part number shown is for standard gold plating.
- For military finish change suffix to "H"
- For commercial finish change suffix to "C"

RDM HIGH POWER: Crimp, Flexible Cable

Straight Receptacle



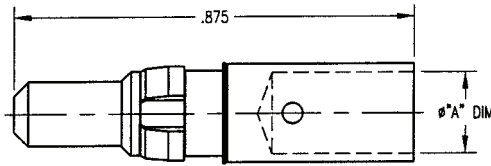
Part Number	Wire Gauge	Current Rating	"A" DIM
221-910-0000G	# 8	40 AMP	.188
221-910-0001G	# 12	20 AMP	.110
221-910-0002G	# 16	10 AMP	.069

- Part number shown is for standard gold plating.
- For military finish change suffix to "H"
- For commercial finish change suffix to "C"

Dimensions shown are in inches.

RDM HIGH POWER: Crimp, Flexible Cable

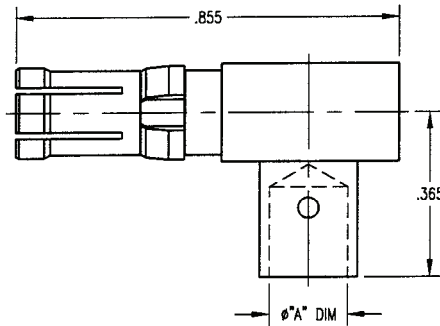
Straight Plug



Part Number	Wire Gauge	Current Rating	"A" DIM
220-910-0000G	# 8	40 AMP	.188
220-910-0001G	# 12	20 AMP	.110
220-910-0002G	# 16	10 AMP	.069

- Part number shown is for standard gold plating.
- For military finish change suffix to "H"
- For commercial finish change suffix to "C"

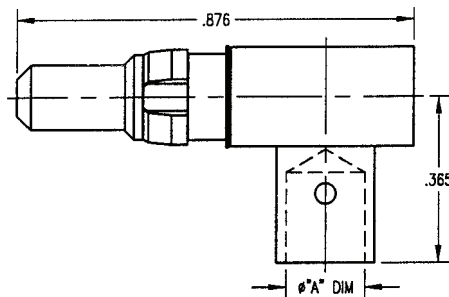
Right Angle Receptacle



Part Number	Wire Gauge	Current Rating	"A" DIM
223-910-0000G	# 8	40 AMP	.188
223-910-0001G	# 12	20 AMP	.110
223-910-0002G	# 16	10 AMP	.069

- Part number shown is for standard gold plating.
- For military finish change suffix to "H"
- For commercial finish change suffix to "C"

Right Angle Plug

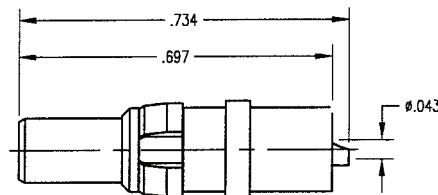


Part Number	Wire Gauge	Current Rating	"A" DIM
222-910-0000G	# 8	40 AMP	.188
222-910-0001G	# 12	20 AMP	.110
222-910-0002G	# 16	10 AMP	.069

- Part number shown is for standard gold plating.
- For military finish change suffix to "H"
- For commercial finish change suffix to "C"

RDM HIGH VOLTAGE: Solder, Flexible Cable

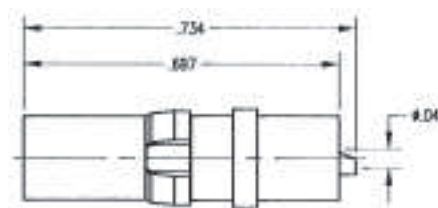
Straight Plug



Part Number	Wire Gauge
230-510-0000H	# 16

- Part number shown is for standard gold plating.
- For military finish change suffix to "H"
- For commercial finish change suffix to "C"

Straight Receptacle



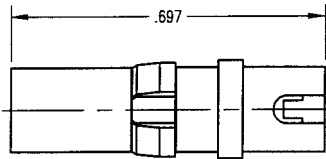
Part Number	Wire Gauge
231-510-0000H	# 16

- Part number shown is for standard gold plating.
- For military finish change suffix to "H"
- For commercial finish change suffix to "C"

Dimensions shown are in inches.

RDM HIGH VOLTAGE: Solder, Flexible Cable

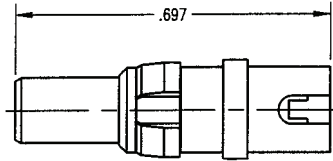
Right Angle Receptacle



Part Number	Wire Gauge
233-510-0000H	# 16

- Part number shown is for standard gold plating.
- For military finish change suffix to "H"
- For commercial finish change suffix to "C"

Right Angle Plug



Part Number	Wire Gauge
232-510-0000H	# 16

- Part number shown is for standard gold plating.
- For military finish change suffix to "H"
- For commercial finish change suffix to "C"

Dimensions shown are in inches.

40 SERIES: Specifications & Interface Dimensions

MECHANICAL:

Materials:

Bodies, Plugs: Brass per ASTM B16, 1/2 HD
Bodies Receptacles: Beryllium Copper per ASTM B196
Female Contacts: Beryllium Copper per ASTM B196
Male Contacts: Brass per ASTM B16, 1/2 HD
Insulators: Teflon per ASTM D1710
Crimp Ferrule: Annealed Copper Alloy
Clip Ring: Beryllium Copper per ASTM B194

Finish:

Body: Gold Plated per MIL-STD-45204
Center Contact: Gold Plated per MIL-STD-45204
Clip Ring: Nickel Plated per QQ-N-290

MATING CHARACTERISTICS:

Receptacles, Outer Contact: 3 lbs. Maximum Insertion on a $.1530 +.0001 / -.0000$ Dia. Pin and a 4 oz. Minimum Withdrawl on a $.1500 +.0000 / -.0001$ Dia. Pin

Plugs, Center Contact: 16 oz. Maximum on a $.0410 +.0001 / -.0000$ Dia. Pin and 5 oz. Minimum Withdrawl on a $.0390 +.0000 / -.0001$ Dia. Pin

Retention in Shell: 15 lbs. Minimum

ELECTRICAL:

Impedance: 50 Ohms Nominal
Frequency Range: 0 to 5.0 GHz
Insulation Resistance: 5000 Megaohms Minimum
Contact Resistance: (Milliohms Maximum)
Center Contact: 5.0
Outer Contact: 3.0
Voltage Standing Wave Ratio: 0 to 5.0 GHz
Straight Connector: $1.15 +.02F$ GHz on RG-316 Cable
Straight Connector: $1.15 +.01F$ GHz on .141 Dia. Semi-rigid Cable

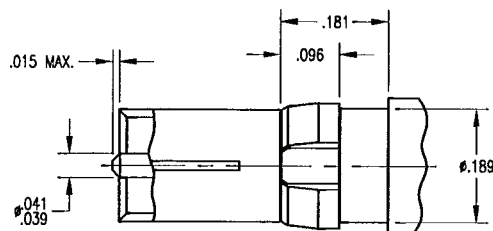
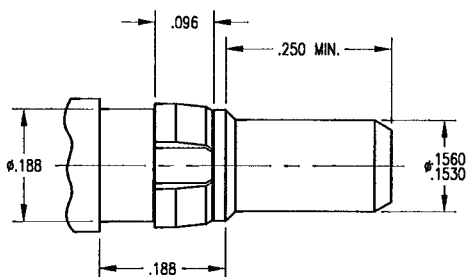
ENVIRONMENTAL:

Operating Temperature: -55°C to $+125^{\circ}\text{C}$
Vibration: MIL-STD-202, Method 204, Test Condition D
Shock: MIL-STD-202, Method 213, Test Condition I
Corrosion Resistance: MIL-STD-202, Test Method 101, Condition B

GENERAL INFORMATION:

31 Series Coaxial Contacts fit housings per DIN 41612
Available in crimp or solder cable terminations

Plug Interface



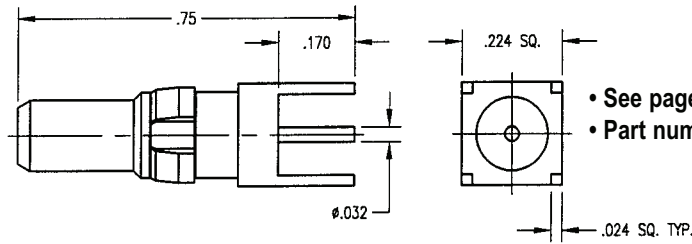
Receptacle Interface

Dimensions shown are in inches.

Winchester Electronics

RDM 40 SERIES: Printed Circuit Board Contacts

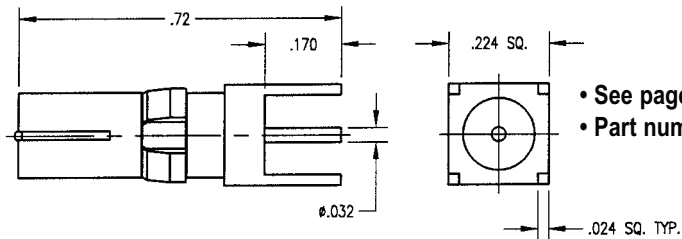
Straight Plug



Part Number	Mounting Hole
400-010-6040G	No. 060A

- See page 78 for mounting hole layout.
- Part number shown is for standard gold plating.

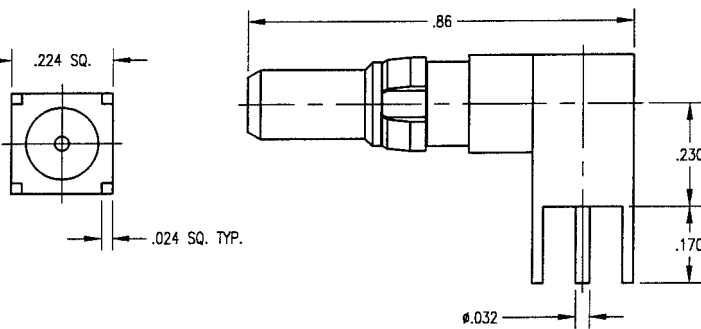
Straight Receptacle



Part Number	Mounting Hole
401-010-6040G	No. 060A

- See page 78 for mounting hole layout.
- Part number shown is for standard gold plating.

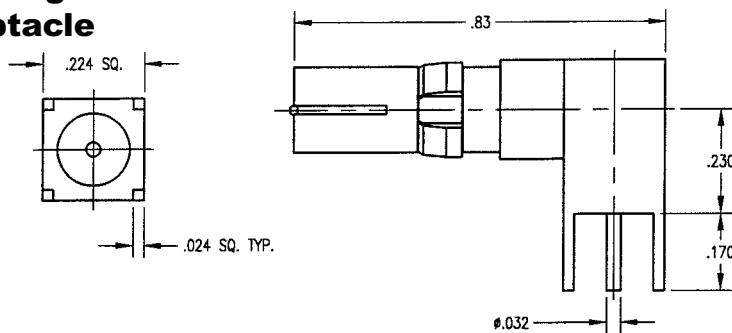
Right Angle Plug



Part Number	Mounting Hole
402-010-6040G	No. 060A

- See page 78 for mounting hole layout.
- Part number shown is for standard gold plating.

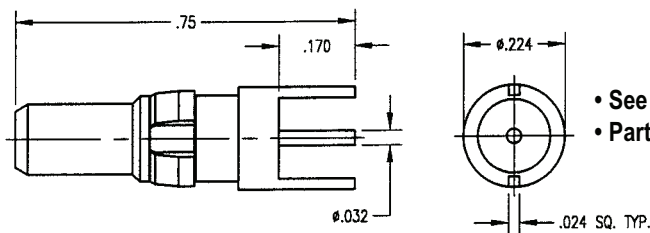
Right Angle Receptacle



Part Number	Mounting Hole
403-010-6040G	No. 060A

- See page 78 for mounting hole layout.
- Part number shown is for standard gold plating.

Straight Plug



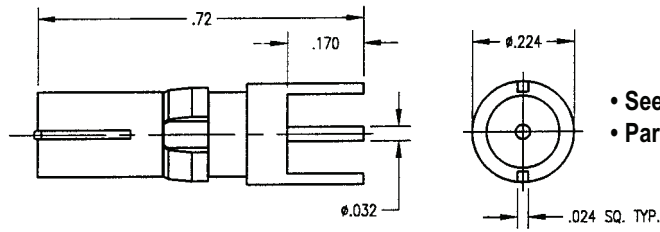
Part Number	Mounting Hole
400-010-6140G	No. 061

- See page 78 for mounting hole layout.
- Part number shown is for standard gold plating.

Dimensions shown are in inches.

RDM 40 SERIES: Printed Circuit Board Contacts

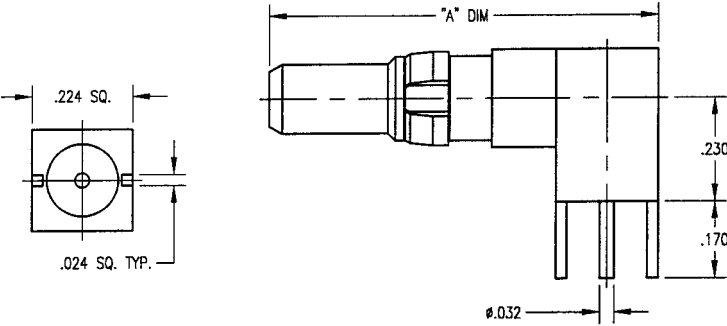
Straight Receptacle



Part Number	Mounting Hole
401-010-6140G	No. 061

- See page 78 for mounting hole layout.
- Part number shown is for standard gold plating.

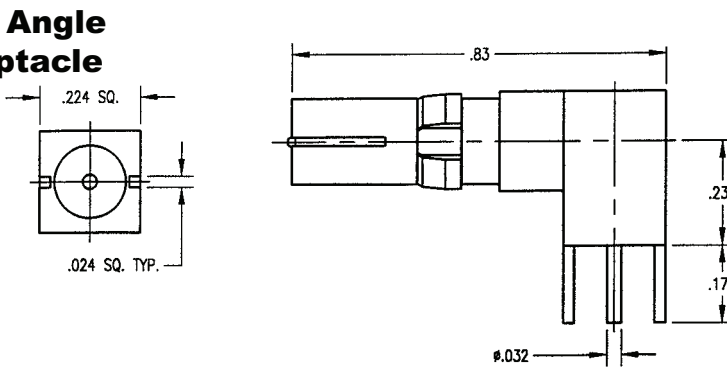
Right Angle Plug



Part Number	Mounting Hole	"A" DIM
402-010-6140G	No. 061	.76
402-010-6141G	No. 061	.86

- See page 78 for mounting hole layout.
- Part number shown is for standard gold plating.

Right Angle Receptacle

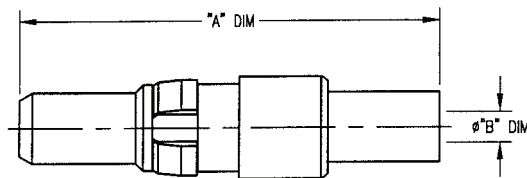


Part Number	Mounting Hole
403-010-6140G	No. 061

- See page 78 for mounting hole layout.
- Part number shown is for standard gold plating.

RDM 40 SERIES: Crimp / Crimp, Flexible Cable

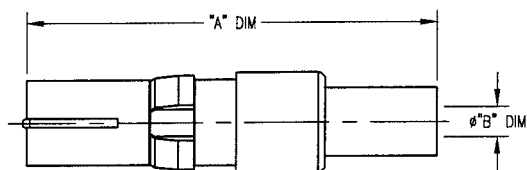
Straight Plug



Part Number	Cable	"A" DIM	"B" DIM
400-910-0630G	RG- 316, 188	.93	.067
400-910-0631G	RG- 316, DS	.93	.067
400-910-1160G	RG- 141, 58	1.09	.120
400-910-1161G	RG- 142, 223	1.09	.120

- See page 87 for cable assembly procedures: CAP 9-07
- Part number shown is for standard gold plating.

Straight Receptacle



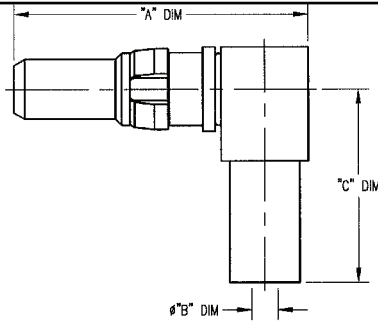
Part Number	Cable	"A" DIM	"B" DIM
401-910-0630G	RG- 316, 188	.86	.067
401-910-0631G	RG-316, DS	.86	.067
401-910-1160G	RG-141, 58	1.02	.120
401-910-1161G	RG- 142, 223	1.02	.120

- See page 87 for cable assembly procedures: CAP 9-07
- Part number shown is for standard gold plating.

Dimensions shown are in inches.

RDM 40 SERIES: Crimp / Crimp, Flexible Cable

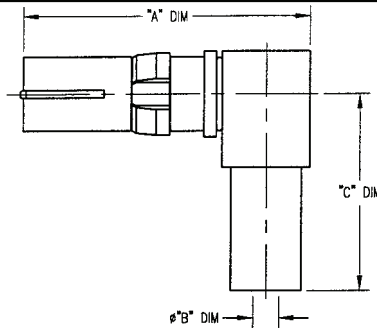
Right Angle Plug



Part Number	Cable	"A" DIM	"B" DIM	"C" DIM
402-910-0630G	RG- 316, 188	.75	.067	.50
402-910-0631G	RG- 316, DS	.75	.067	.50
402-910-1160G	RG- 141, 58	.75	.120	.60
402-910-1161G	RG- 142, 223	.75	.120	.60

- See page 88 for cable assembly procedures: CAP 9-16
- Part number shown is for standard gold plating.

Right Angle Receptacle

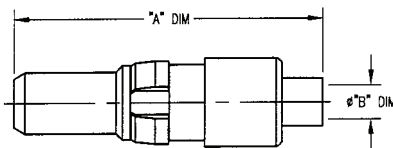


Part Number	Cable	"A" DIM	"B" DIM	"C" DIM
403-910-0630G	RG- 316, 188	.71	.067	.50
403-910-0631G	RG- 316, DS	.71	.067	.50
403-910-1160G	RG- 141, 58	.71	.120	.60
403-910-1161G	RG- 142, 223	.71	.120	.60

- See page 88 for cable assembly procedures: CAP 9-16
- Part number shown is for standard gold plating.

RDM 40 SERIES: Solder / Solder, Semi-Rigid Cable

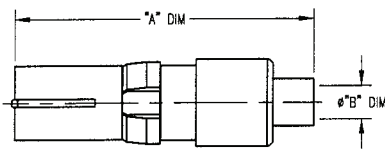
Straight Plug



Part Number	Cable	"A" DIM	"B" DIM
400-510-0850G	RG- 405 (.085 SR)	.79	.090
400-510-1410G	RG- 402 (.141 SR)	.79	.148

- See page 83 for cable assembly procedures: CAP 5-15
- Part number shown is for standard gold plating.

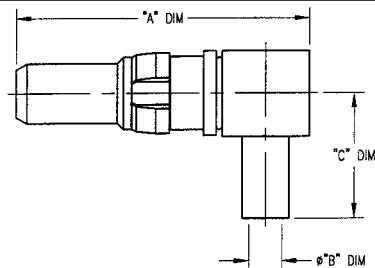
Straight Receptacle



Part Number	Cable	"A" DIM	"B" DIM
401-510-0850G	RG- 405 (.085 SR)	.72	.090
401-510-1410G	RG- 402 (.141 SR)	.72	.148

- See page 83 for cable assembly procedures: CAP 5-15
- Part number shown is for standard gold plating.

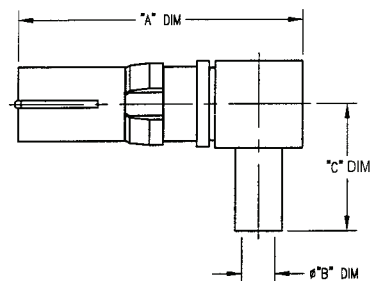
Right Angle Plug



Part Number	Cable	"A" DIM	"B" DIM	"C" DIM
402-510-0850G	RG- 405 (.085 SR)	.75	.090	.31
402-510-1410G	RG- 402 (.141 SR)	.75	.148	.31

- See page 84 for cable assembly procedures: CAP 5-16
- Part number shown is for standard gold plating.

Right Angle Receptacle



Part Number	Cable	"A" DIM	"B" DIM	"C" DIM
403-510-0850G	RG- 405 (.085 SR)	.69	.090	.31
403-510-1410G	RG- 402 (.141 SR)	.69	.148	.31

- See page 84 for cable assembly procedures: CAP 5-16
- Part number shown is for standard gold plating.

Dimensions shown are in inches.

Winchester Electronics