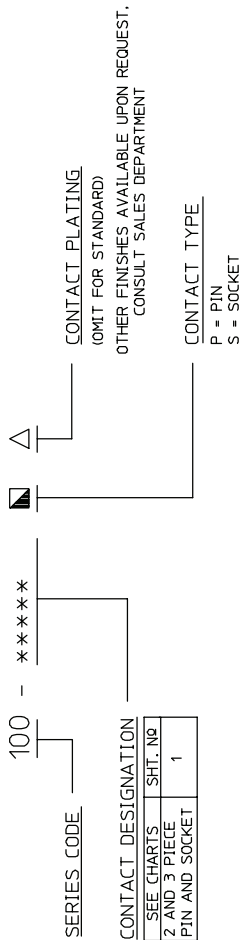


**NOTES:**

1. CATALOG NUMBER CODE:

100 SERIES CODE ORDER CHART



2 CRIMP CONTACTS AVAILABLE ON REELS (2000/REEL).  
SEE CHART FOR REEL PART NO.

REV	DESCRIPTION	BY	DATE	APP'D
A	RELEASED ECR# 4/77		03/28/96	K.D.B. W.P.M.

SPECIFICATIONS

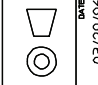
MATERIALS & FINISHES

- 1 Socket Contact Material: Copper Alloy  
Finish: Standard= 8µ/0.2µm Gold Over Nickel
- 2 Pin Contact Material: Copper Alloy  
Finish: Standard= 8µ/0.2µm Gold Over Nickel
- 3 Retainer Clip Material: Beryllium Copper Alloy  
Finish: Gold Plated
- 4 Sleeve Material: Stainless Steel  
Finish: Passivating Dip

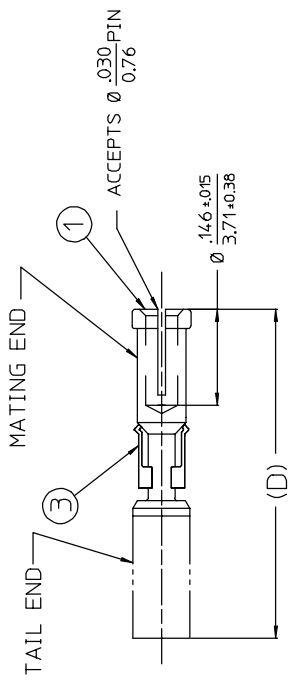
PERFORMANCE CHARACTERISTICS

Current rating 5 amps. max. per individual contact

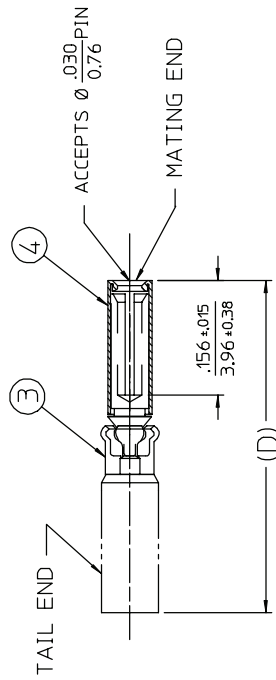
DESCRIPTION	CATALOG NO	LOCATORS/POSITIONERS
INSERTION TOOL	107-1011	
REMOVAL TOOL	107-1012	
PNEUMATIC AUTOMATIC CRIMP	107-0952	
NON-ADJUSTABLE MINIATURE HAND CRIMP	107-43300	107-43302
ADJUSTABLE MINIATURE HAND CRIMP	107-0625	107-0626
GAGE PLUG	5431	

PER ANSI Y14.5M-1987 UNLESS OTHERWISE SPECIFIED: DIMENSIONS ARE IN INCHES OR INCHES / WH TOLERANCES DECIMALS .XX ± .005 XXX ± .015 ANGLES ±                   SCALE: 5:1			
<b>CUSTOMER DRAWING</b> DATE RECORDED: 03/28/96 DATE: 03/29/96 W.P.M. DATE APPROVED: 03/28/96 V.B.H. R.D.R.		<b>Littton</b> Winchester Electronics 400 PARK ROAD WATERLOO, CONNECTICUT 06795	
TITLE: SREC/42 REMOVABLE PIN & SOCKET CONTACTS		REV. A	
C		22892	
SHEET 1 OF 2		A	

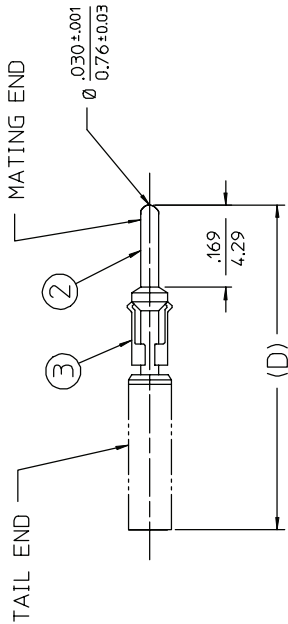
REV	DESCRIPTION	DATE	APPD
A	RELEASED ECR# 4177	03/28/96	K.D.B.
			W.P.M.



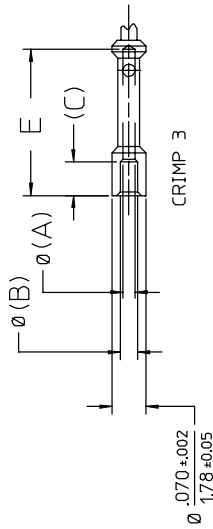
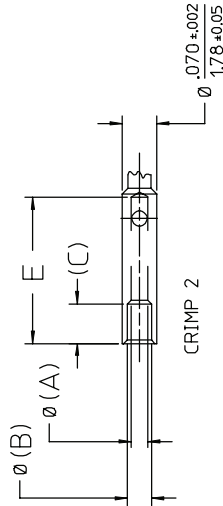
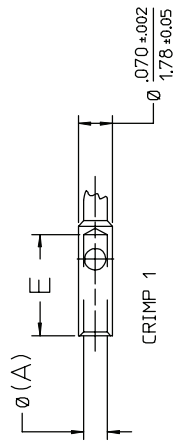
CATALOG NO 100-40\*\*S-Δ SHOWN  
2 PIECE SOCKET



CATALOG NO 100-540\*\*S-Δ SHOWN  
3 PIECE SOCKET



CATALOG NO 100-40\*\*P-Δ SHOWN  
PIN



TAIL OPTIONS

CATALOG NO	REEL CAT. NO	WIRE SIZE	TAIL OPTION	A	B	C	D	E
100-4020P-Δ	100-0801P-Δ	20-22	CRIMP 1	.046/1.17	—	—	.500/12.70	.156/3.96
100-4024P-Δ	100-0805P-Δ	24-26-28	CRIMP 2	.028/0.71	.055/1.40	.065/1.65	.566/14.38	.234/5.94
100-4028P-Δ	100-0809P-Δ	28-30	CRIMP 3	.020/0.51	.043/1.09	.055/1.40	—	—
100-4020S-Δ	100-0802S-Δ	20-22	CRIMP 1	.046/1.17	—	—	.473/12.01	.156/3.96
100-4024S-Δ	100-0806S-Δ	24-26-28	CRIMP 2	.028/0.71	.055/1.40	.065/1.65	.539/13.69	.234/5.94
100-4028S-Δ	100-0810S-Δ	28-30	CRIMP 3	.020/0.51	.043/1.09	.055/1.40	—	—
100-54020S-Δ	100-0804S-Δ	20-22	CRIMP 1	.046/1.17	—	—	.488/12.40	.156/3.96
100-54024S-Δ	100-0823S-Δ	24-26	CRIMP 2	.028/0.71	.055/1.40	.065/1.65	.544/13.82	.234/5.94
100-54028S-Δ	—	28-30	CRIMP 3	.020/0.51	.043/1.09	.055/1.40	—	—

UNLESS OTHERWISE SPECIFIED: DIMENSIONS ARE IN INCHES, OR INCHES / MM			
TOLERANCES	XX ± .005	DATE CHECKED	DATE
DECIMALS	.XXX ± .001	W.P.M.	03/29/96
ANGLES	5:1	V.B.H.	03/29/96
CUSTOMER DRAWING		TITLE	
SREC/42 REMOVABLE PIN & SOCKET CONTACTS		Winchester Electronics	
400 PARK ROAD WATERLOO, CONNECTICUT 06795		22892	
REV. A		SHEET 2 OF 2	