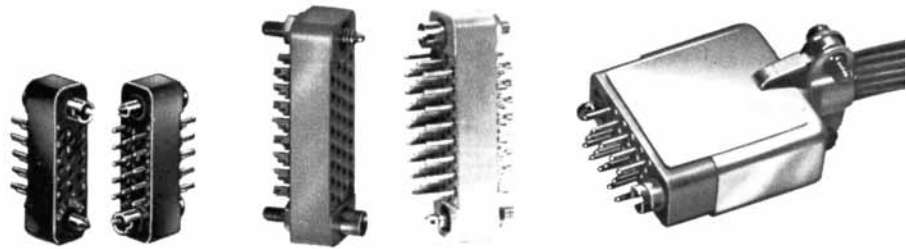


SLE-SME-SRE Series

Sub Miniature / High Density Rectangular / .025" Dia. / 3 Amps .030" Dia. / 5 Amps / .040" Dia. / 7.5 Amps



SLE
.025 Diameter Contacts — 3 Amps.

SRE
.030 Diameter Contacts — 5 Amps

SME
.040 Diameter Contacts — 7.5 Amps

Within this series, you'll find a standard size connector for which you can select one of three current ratings: 3, 5 or 7.5 amps. Compact and lightweight, they are especially

suited for aircraft, instrumentation and portable equipment applications. Right angle, dip solder, pin or socket contacts are available. Consult factory.

Specifications

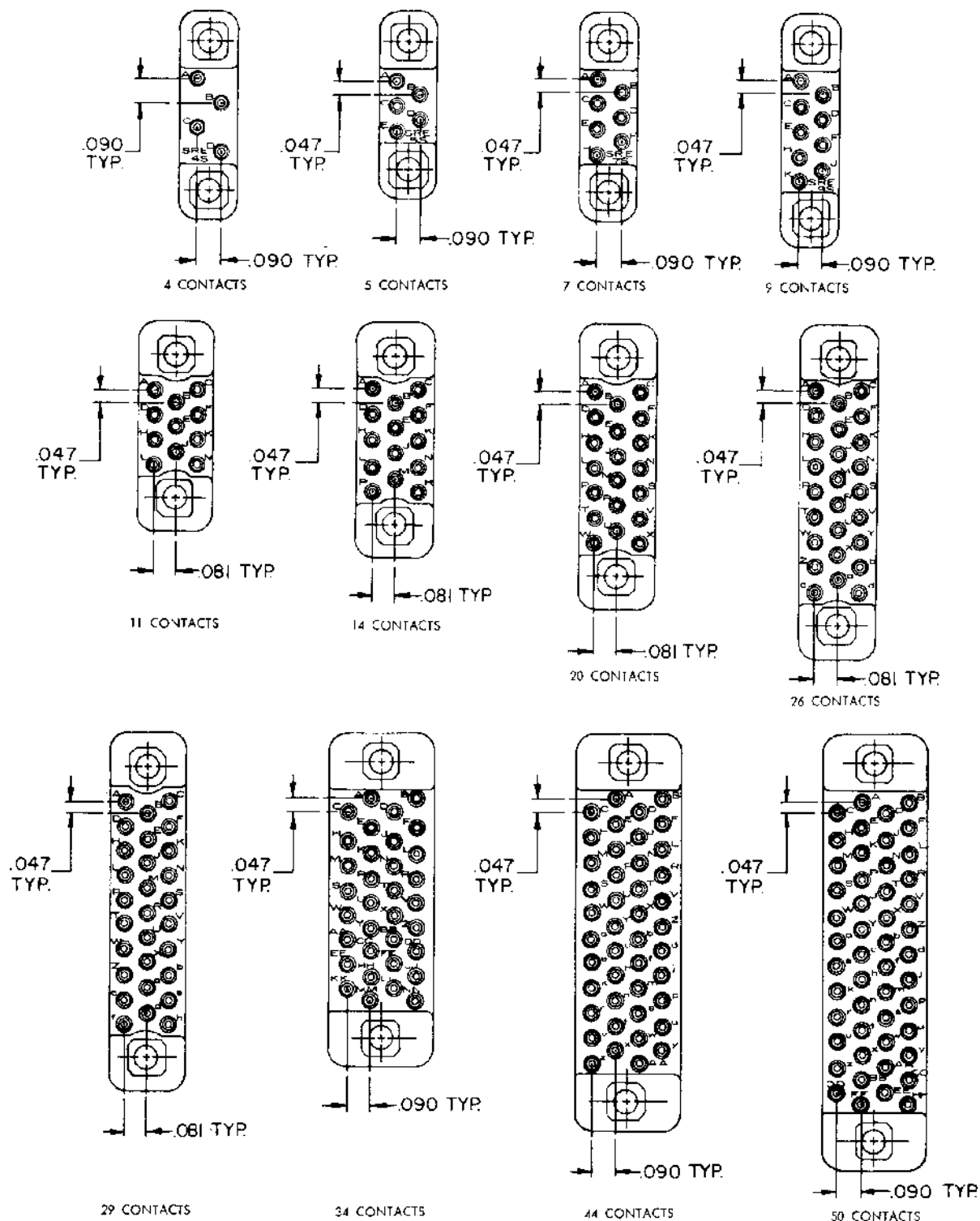
Current Rating:	SLE - 3 amps; SRE - 5 amps; SME - 7.5 amps.	Dielectric:	electrification at 1000 VAC. Green glass-filled diallyl phthalate per MIL-M-14, SDG-F.
No. of Contacts:	4, 5, 7, 9, 11, 14, 20, 26, 29, 34, 44, 50.	Guides:	Type NSS stainless steel, passivated or Type N Brass, gold plated.
Pin Contacts:	Brass, gold plated except for SLE which is phosphor bronze, gold plated.	Jackscrews:	Stainless steel, passivated. Aluminum knobs on the jackscrews are equipped with set screws, except JTU jackscrews which have stainless steel knobs equipped with groove pins.
Socket Contacts:	Phosphor bronze, gold plated.	Hoods:	Anodized aluminum. May be applied to either plug or receptacle. Both top and side openings are available for use with either guides or jackscrews.
Termination Types:	.037 diameter solder cup will accept up to #22 AWG stranded wire. Solder cup adaptor (Part No. S45) will accept up to #20 AWG stranded wire. Dip solder terminations available for SRE Series, .030 Dia. Check Sales Department for available lengths. Military versions of SRE are QPL'd to M28748/7 and M28748/8.		
Electrical Data:	The dielectric withstanding voltage is one minute		

SLE-SME-SRE Series

Contact Arrangement

Mating Face of Female Moldings - Male Moldings Reverse Image

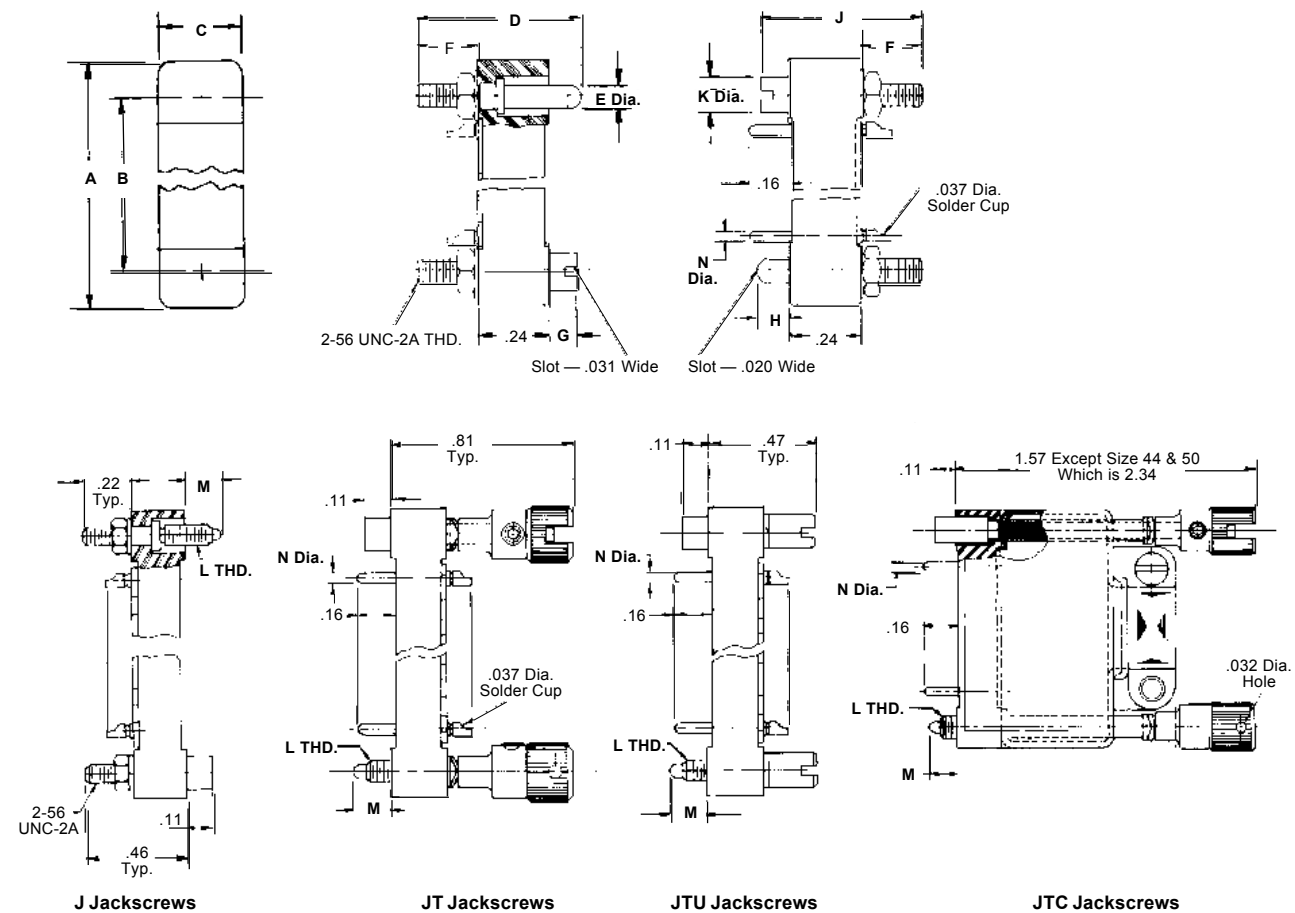
Dimensions are for reference only and are subject to change. Outline drawings on request.



SLE-SME-SRE Series

Outline

Dimensions are for reference only and are subject to change. Outline drawings on request.



Dimensions

The stainless steel guide pin and socket have good physical strength and are particularly desirable for mounting connectors which will be

subject to severe vibration in service, but not for electrical applications. Optional gold plated brass available for electrical applications.

No. of Contacts	A	B	C
4	.78	.562	.21
5	.70	.482	.21
7	.78	.562	.21
9	.88	.656	.21
11	.78	.531	.28
14	.88	.625	.28
20	1.06	.814	.28
26	1.25	1.000	.28
29	1.34	1.094	.28
34	1.25	1.032	.39
44	1.48	1.267	.39
50	1.63	1.408	.39

Series	D	E Dia	F	G	H	J	K	L Thd	M	N
SLE	.62	.08	.24	.10	.14	.59	.125	2-56 UNC	.15	.025
SRE	.57	.09	.22	.11	.12	.57	.137	3-48 UNC*	.12	.030
SME	.62	.08	.24	.10	.14	.59	.125	2-56 UNC	.15	.040

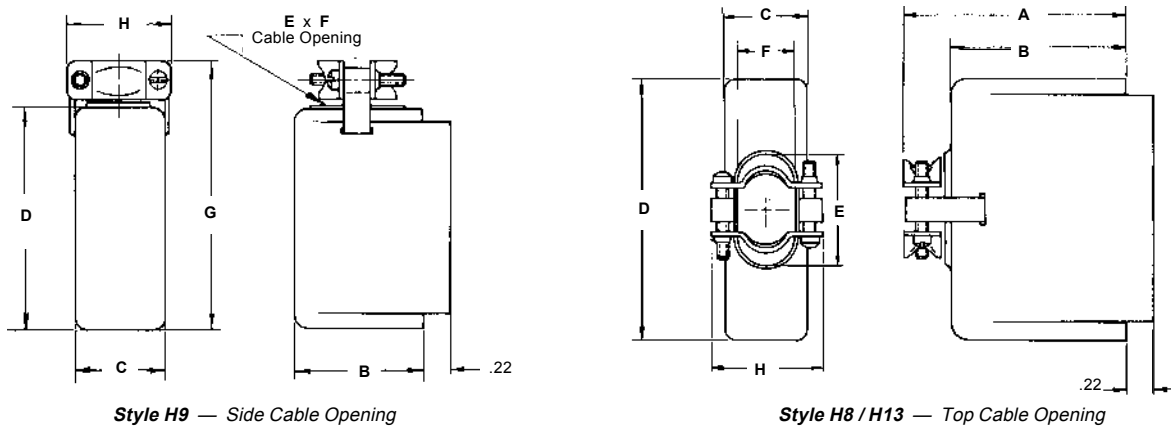
*2-56 UNC Thread also available.
See ordering information for part number suffix.

SLE-SME-SRE Series

Outline

Hoods Formed Aluminum

Dimensions are for reference only and are subject to change. Outline drawings on request.



Dimensions

Hood Style	Hood Catalog Number Guides Only*	Dimensions						Cable Opening		No. of Con-acts
		A	B	C	D	G	H	E	F	
H8	SRE11H8	1.02	.72	.33	.78	—	.53	.28	.28	11
H8	SRE50H8	1.80	1.50	.45	1.63	—	.63	1.19	.38	50
H9	SRE11H9	—	.72	.33	.78	1.08	.53	.50	.22	11
H9	SRE50H9	—	1.50	.45	1.63	1.92	.63	1.19	.38	50
H13	SRE4&7H13	1.02	.75	.25	.78	—	.53	.22	.16	4 & 7
H13	SRE14H13	1.02	.75	.34	.88	—	.53	.25	.16	14
H13	SRE20H13	1.02	.75	.34	1.06	—	.53	.38	.25	20
H13	SRE26H13	1.02	.75	.34	1.25	—	.53	.41	.25	26
H13	SRE34H13	1.05	.75	.45	1.25	—	.63	.73	.38	34
NOT AVAILABLE										5
NOT AVAILABLE										9
H13	SRE29H13	1.02	.75	.34	1.34	—	.53	.41	.25	29
NOT AVAILABLE										44

* Add "J" to hood part number when used with fixed jackscrews
Add "JTC" to hood part number when used with long turning jackscrews.

Ordering Infomation

SRE34SJTC H13

Step 1

Insert Code Series:

SLE- .025 Dia. Contact

SME- .040 Dia. Contact

SRE- .030 Dia. Contact

Step 2

Number of Contacts:

4, 5, 7, 9, 11, 14, 20, 26, 29, 34, 44, 50

Step 3

Contact Designation:

P- Pin

S- Socket

Step 4

Special Contacts:

This step to be used only when a special material, finish, or style is required. Omit when standard contacts are used. Consult sales department for proper designation. Order Solder Cup Adapter for #20 AWG Stranded wire. Use Part No. S45. Must be ordered separately.

Step 5

Jackscrew Locks:

J- Polarized Fixed Screw & Socket

JT- Polarized Short Turning Screw & Socket

JTC- Polarized Long Turning Screw & Socket

JTU- Polarized Short Turning Screw & Socket with Round Knob

Guides:

NSS- Stainless Steel Cylindrical Polarized Guides

N- Gold Plated Brass Polarized Guides

Step 6

Mounting:

H8- Large Top Opening

H13- Large Top Opening (High)

H9- Large Side Opening

*When ordering hoods separately use Catalog Number in Chart

Step 7

For Special 2-56 thds add -859 suffix on Series SRE part numbers