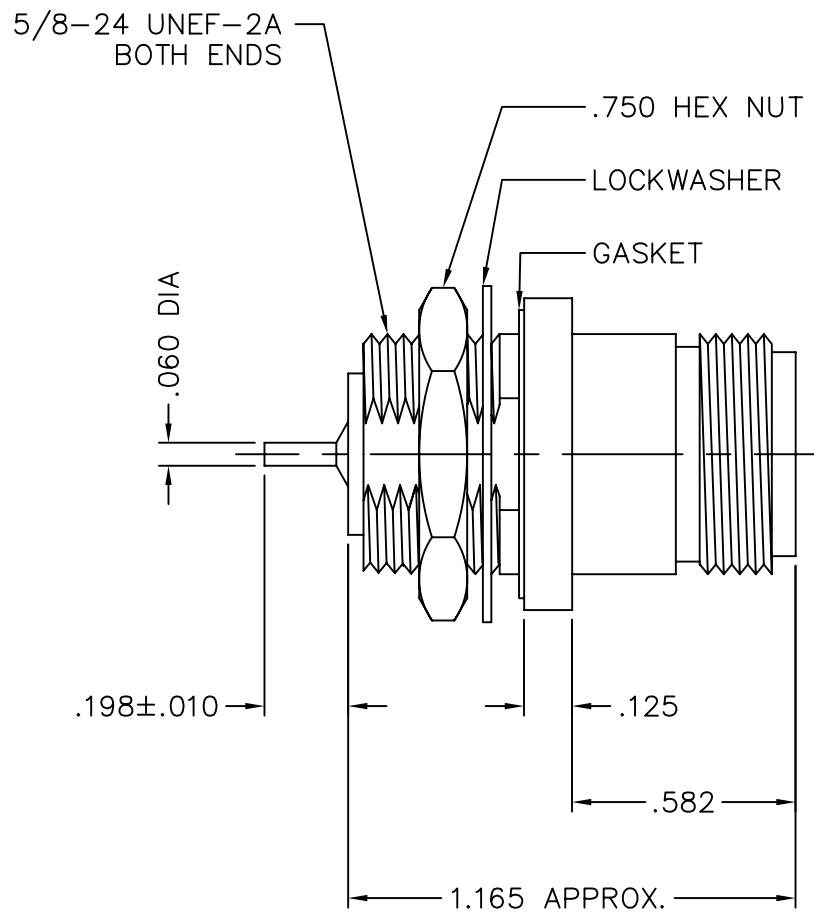
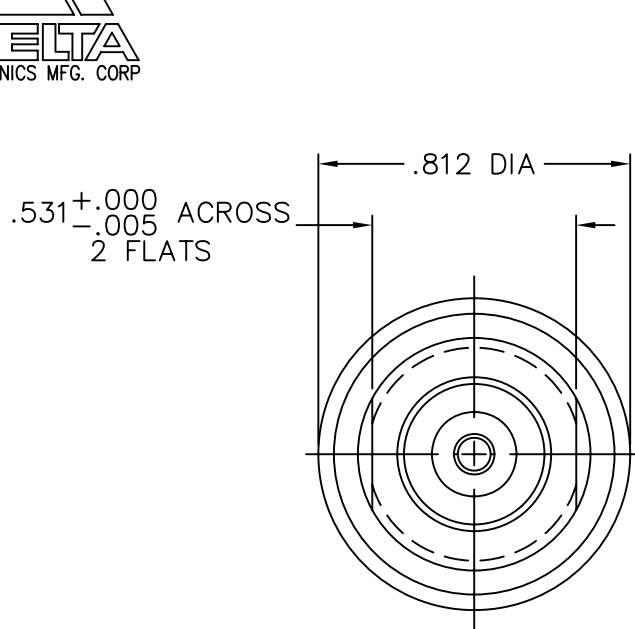




1120-000-A728-6



NOTES:

1. ASSEMBLED CONNECTOR INTERFACE IS DESIGNED IN ACCORDANCE WITH MIL-STD-348.
2. MATERIAL: LOCKWASHER - SPRING STEEL
 CONTACT (INSIDE) - BERYLLIUM COPPER PER ASTM B196.
 INSULATOR - TEFLON PER ASTM D1710
 GASKET - SILICONE RUBBER PER ZZ-R-765
 ALL OTHER PARTS - BRASS PER ASTM B16
3. FINISHES: CONTACTS - GOLD PLATE PER MIL-G-45204
 HERMETIC SEAL - 60/40 TIN REFLOW
 ALL OTHER METAL PARTS - SILVER PLATE PER QQ-S-365

UNLESS OTHERWISE SPECIFIED: TOLERANCES: 3 PLACES = ±.005, 2 PLACES = ±.02, ANGLES = ±1/2°, SURFACE FINISH = 63

A	REVISED	DATE
-	OUTLINE	6/20/06
ALT.	REVISIONS	DATE

DELTA ELECTRONICS MFG. CORP. Beverly, MA 01915				
TITLE: "N" BULKHEAD HERMETICALLY SEALED JACK RECEPTACLE - POST CONTACT				
Drawn by BJM 6/20/06	Scale 2/1	Ckd. by MR	Engr Appd MR	FILE NAME: 1121000A728-006T

THESE DRAWINGS AND SPECIFICATIONS ARE THE PROPERTY OF DELTA ELECTRONICS MFG CORP. AND SHALL NOT BE REPRODUCED, OR COPIED OR USED AS THE BASIS FOR THE MANUFACTURE OR SALE OF APPARATUS OR DEVICES WITHOUT THEIR EXPRESS WRITTEN CONSENT.

CODE IDENT.-00795

1120-000-A728-6