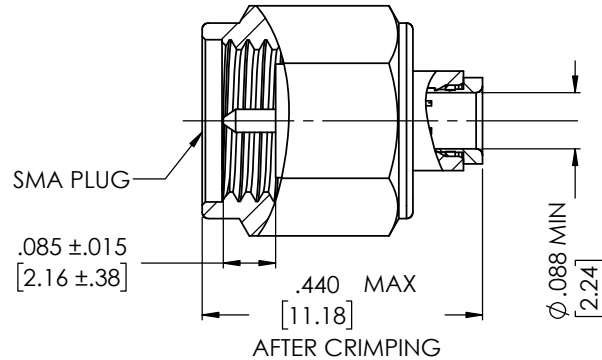
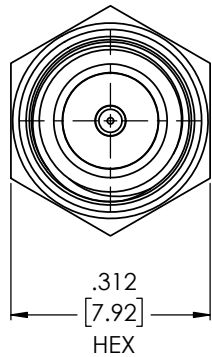


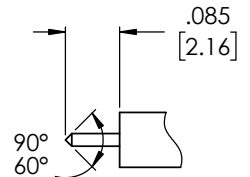
1301025K005-003



MECHANICAL SPECIFICATIONS	
DURABILITY	500 CYCLES
CAPTIVATION - CONTACT	6 LBS AXIAL
MATING TORQUE	7-10 IN-LBS
CABLE RETENTION	20 LBS MIN.
ELECTRICAL SPECIFICATIONS	
FREQUENCY RANGE	DC - 18 GHz
VSWR (MAX)	1.07+.01F(GHz)
IMPEDANCE	50 ± 2 OHMS
WORKING VOLTAGE @ SEA LEVEL	335 Vrms
DWV @ SEA LEVEL	1000 Vrms
INSULATION RESIST.	5000 MEGOHMS
ENVIRONMENTAL SPECIFICATIONS	
TEMP RANGE	-65° TO +165° C

NOTES:

1. ASSEMBLED CONNECTOR INTERFACE IS DESIGNED IN ACCORDANCE WITH MIL-STD-348.
2. CRIMP TAIL USING M22520/36-01 HAND TOOL OR EQUIVALENT. CONTACT FACTORY FOR RECOMMENDED ASSEMBLY INSTRUCTIONS.



RECOMMENDED TRIM DIMENSIONS

DESCRIPTION	MATERIAL	FINISH
CONTACT	BERYLLIUM COPPER PER ASTM B196, C17300, TEMPER TD04	GOLD PLATE PER ASTM B488
INSULATOR	TEFLON PER ASTM D1710, TYPE 1, GRADE 1, CLASS A.	N/A
GRIP SLEEVE	CORROSION RESISTANT STEEL PER ASTM A582, S30300, COND. A	SULFAMATE NICKEL PLATE PER MIL-P-27418
LOCKING RING	BERYLLIUM COPPER PER ASTM B196, C17300, TEMPER TD04	N/A
COUPLING NUT	CORROSION RESISTANT STEEL PER ASTM 582, S30300, COND. A	PASSIVATE PER SAE-AMS2700
GASKET	SILICONE RUBBER PER A-A-59588	N/A
BODY	CORROSION RESISTANT STEEL PER ASTM A582, CLASS 303	PASSIVATE PER SAE-AMS2700

Table 1

PROPRIETARY AND CONFIDENTIAL
 THE INFORMATION CONTAINED IN THIS DRAWING IS THE SOLE PROPERTY OF DELTA ELECTRONICS MFG CORP. ANY REPRODUCTION IN PART OR AS A WHOLE WITHOUT THE WRITTEN PERMISSION OF DELTA ELECTRONICS MFG CORP. IS PROHIBITED.
 FILE NAME: 1301025K005-003F

UNLESS OTHERWISE SPECIFIED:		NAME	DATE	DELTA ELECTRONICS MFG CORP. BEVERLY, MA 01915 www.deltarf.com / Ph: 978-927-1060 / Fax: 978-922-6430	
DIMENSIONS ARE IN INCHES		DRAWN	ADK		3/18/2024
TOLERANCES:		CHECKED	BJM		3/18/2024
FRACTIONAL ± 1/64		ENG APPR.	BJM		3/18/2024
ANGULAR: MACH ± 1° BEND ± 1°		COMMENTS:		TITLE: SMA STRAIGHT MIL CATEGORY F PLUG RG-405/U (.085 S.R.)	
TWO PLACE DECIMAL ± .01		SIZE	DWG. NO.		REV
THREE PLACE DECIMAL ± .005		B	1301025K005-003		-
SURFACE FINISH = 63		CODE ID - 00795	WEIGHT: 2.34 g	SHEET 1 OF 1	
MAX. CORNER BREAKS = .004		SCALE: 5:1			