

This document, including the design, configuration and mechanical features revealed herein are the sole, confidential and proprietary property of Winchester Interconnect. Reproduction or use thereof, in whole or part, is prohibited without the prior written consent of Winchester Interconnect.

REV.	DESCRIPTION	DATE	APPROVED
A	ECO-14653	12/21/21	ASNZ

MATERIALS:

STAINLESS STEEL ASTM A582,
 BERYLLIUM COPPER PER ASTM B196
 PTFE FLUOROCARBON PER ASTM D1710
 SILICONE RUBBER PER A-A-59588
 BRASS PER ASTM B16
 PHOSPHOR BRONZE PER ASTM B159

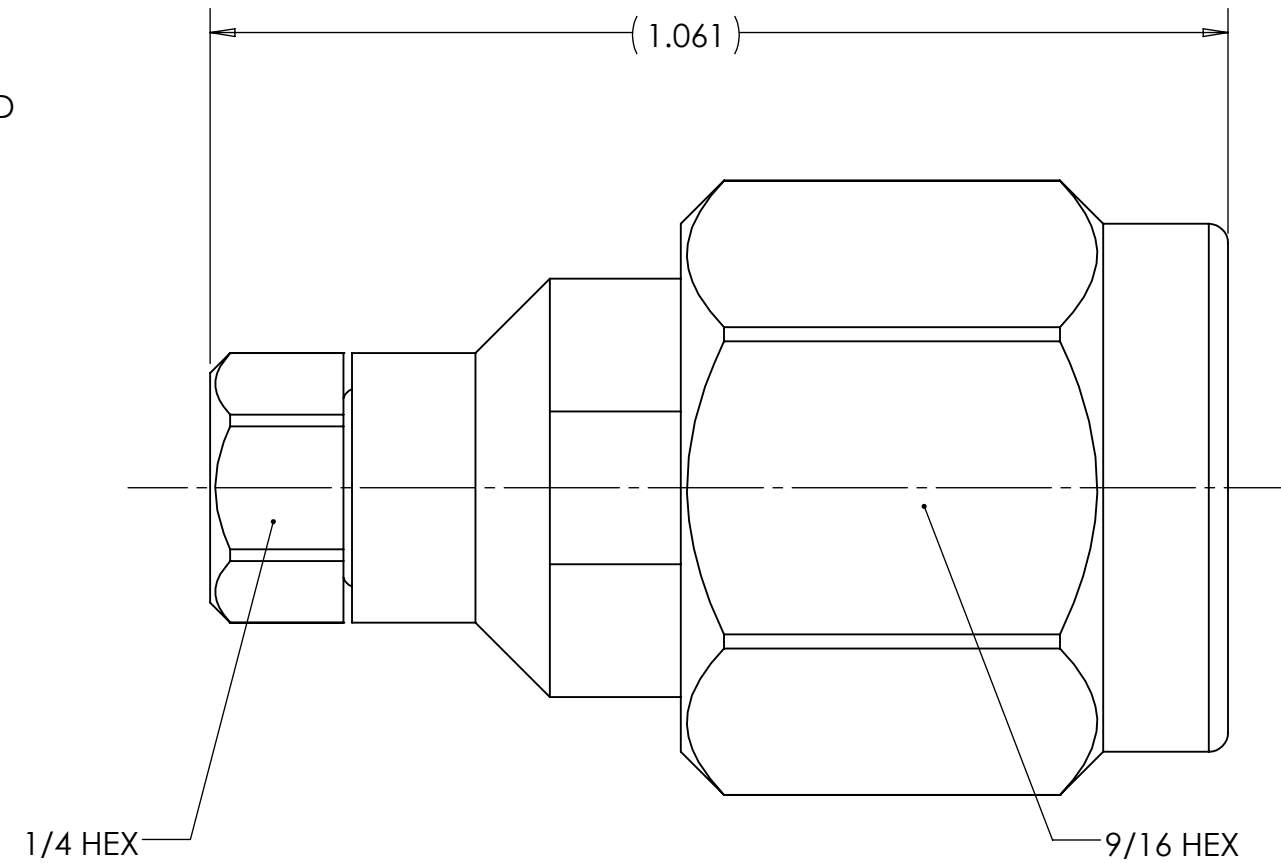
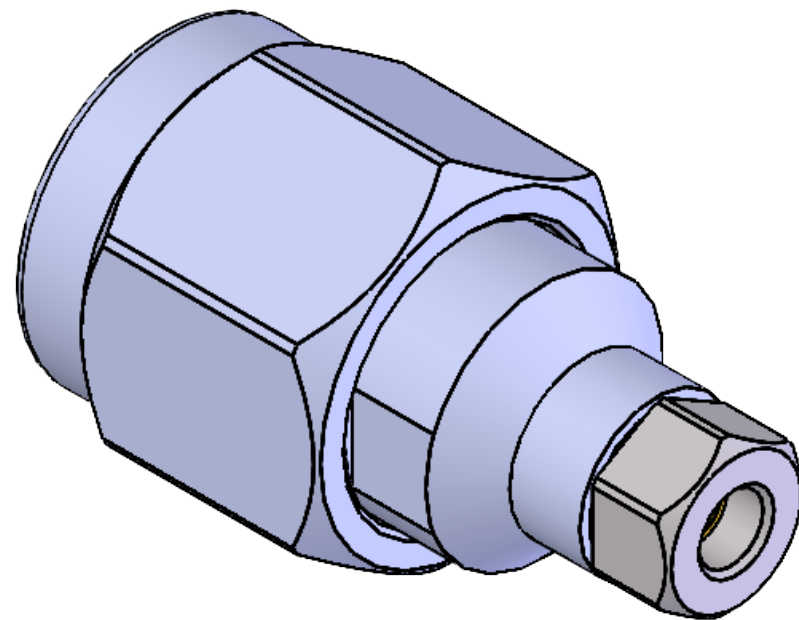
FINISH:

CENTER CONDUCTOR AND SOLDER COMPONENTS SHALL BE PLATED PER MIL-DTL-45204D TYPE II, CLASS 1 OVER NICKEL PLATE SAE AMS-QQ-N-290
 BODY AND BODY COMPONENTS SHALL BE PASSIVATED PER AMS 2700.

ELECTRICALS:

NOMINAL IMPEDANCE: 50 OHMS.
 FREQUENCY RANGE: DC TO 18 GHz.
 VSWR: 1.15:1 MAX
 INSERTION LOSS: $.05 \sqrt{F}$ (GHz) dB.

CLAMP NUT, SOLDER SLEEVE, REAR INSULATOR AND CONTACT SHIPPED LOOSE



UNLESS OTHERWISE SPECIFIED:
 DIMENSIONS ARE IN INCHES

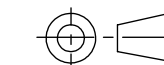
TOLERANCES:
 .X: ±0.1
 .XX: ±0.01
 .XXX: ±0.005
 ANGLES: ±1.0°
 MACHINED SURFACES:

63/

DRAWN LMW	DATE 12/04
APPR.	DATE
APPR.	DATE
dcamelio	1/5/22

 **Winchester Interconnect.**
 68 Water Street
 Norwalk, CT 06854

TITLE:
 TNC PLUG TO .085 S/R

THIRD ANGLE PROJECTION 	SIZE B	DWG. NO. 40-000-1585-00	REV A
	SH 1 OF 1		