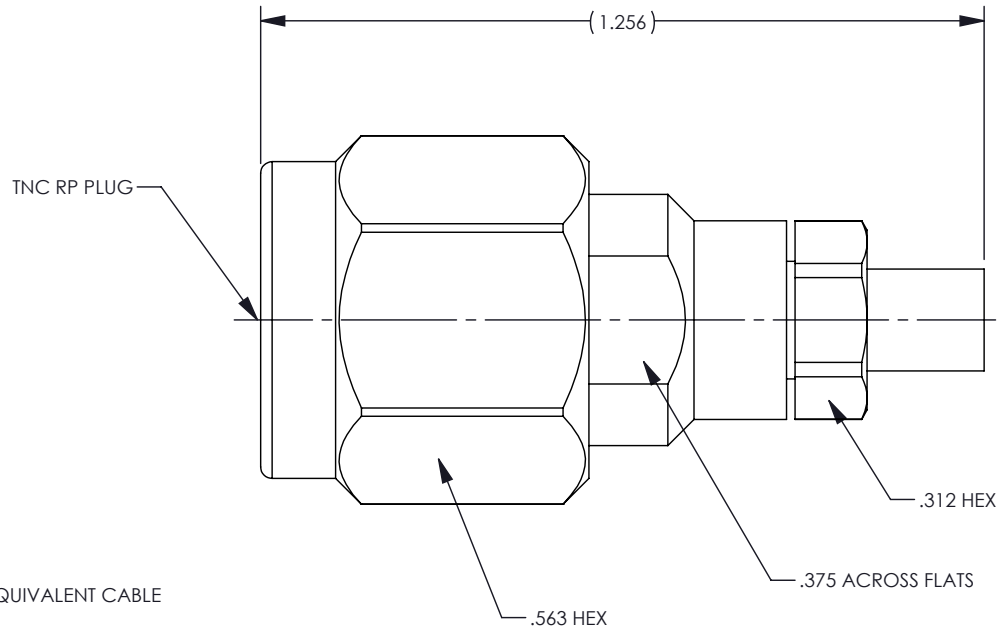
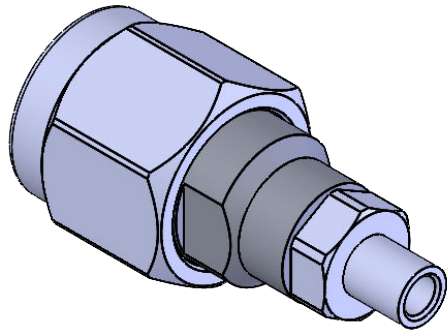


This document, including the design, configuration and mechanical features revealed herein are the sole, confidential and proprietary property of Winchester Interconnect. Reproduction or use thereof, in whole or part, is prohibited without the prior written consent of Winchester Interconnect.

REV	DESCRIPTION	DATE	APPROVED
A	RELEASED PER EP-2846	5/27/22	DCam



NOTES: UNLESS OTHERWISE SPECIFIED

1. DESIGNED FOR USE WITH WINCHESTER INTERCONNECT SRC-405 OR EQUIVALENT CABLE

2. MATERIAL SPECIFICATIONS:
 STAINLESS STEEL PER ASTM A582
 BRASS PER ASTM B16
 BERYLLIUM COPPER PER ASTM B196
 PTFE PER ASTM D1710
 SILICONE RUBBER PER A-A-59588
 PHOSPHOR BRONZE PER ASTM B159

3. FINISH SPECIFICATIONS:
 CONTACT & SOLDER SLEEVE: GOLD PLATE PER MIL-DTL-45204 OVER NICKEL PLATE PER SAE-AMS-QQ-N-290
 BODY, COUPLING NUT AND CLAMP NUT: PASSIVATE PER AMS-2700

4. ELECTRICAL SPECIFICATIONS:
 IMPEDANCE: 50 OHMS
 FREQUENCY RANGE: DC TO 18 GHz
 VSWR: 1.35 MAX DC TO 18 GHz
 INSERTION LOSS: .05 X \sqrt{f} (GHz) MAX DC TO 18 GHz

5. SOLDER SLEEVE, REAR INSULATOR AND CLAMP NUT SHIPPED UNASSEMBLED



68 Water St.
 Norwalk, CT 06854

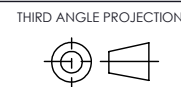
DRAWN	DATE
DCam	5/26/22
APPR.	DATE
xxx	xx/xx/xx
APPR.	DATE
xxx	xx/xx/xx



TITLE:
**TNC REVERSE POLARITY PLUG
 FOR SRC-405 CABLE**

UNLESS OTHERWISE SPECIFIED:
 DIMENSIONS ARE IN INCHES [MM]

TOLERANCES:
 .X[X]: ±0.1[3]
 .XX[X.X]: ±0.01[0.3]
 .XXX[X.XX]: ±0.005[0.13]
 ANGLES: ±2.0°



SIZE
A
 SH 1 OF 1

DWG. NO.
96-000-1584-00

REV
A